

Milled

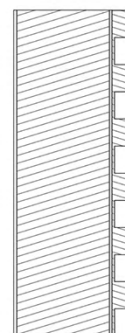
Sistema84

FINISHES

  
FLORITELLI®  
CUCINE

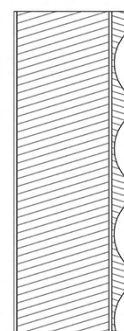
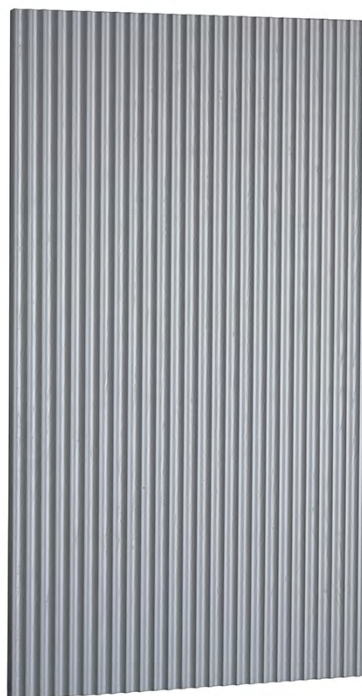
## Sistema 84 con anta Milled 01

Il sistema 84 propone l'anta in rovere e noce massello. Lavorata con effetto a rilievo 3D, il gioco di luci e ombre conferisce all'alta un forte carattere architettonico. Il frontale fresato ha spessore di 4,5 mm. Il retro è fornito di un pannello da 1 mm nella stessa finitura e tutti i lati sono bordati, per uno spessore totale di 24mm.



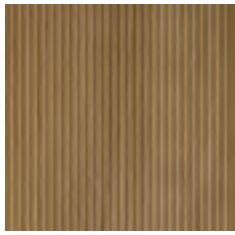
## Sistema 84 con anta Milled 04

Il sistema 84 propone l'anta in rovere e noce massello. Lavorata con effetto a rilievo 3D, il gioco di luci e ombre conferisce all'alta un forte carattere architettonico. Il frontale fresato ha spessore di 4,5 mm. Il retro è fornito di un pannello da 1 mm nella stessa finitura e tutti i lati sono bordati, per uno spessore totale di 24mm.



## Rovere tinto

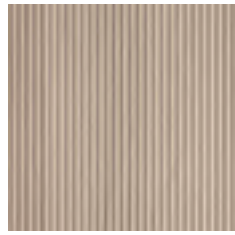
Stained oak / chêne teinté



Orzo



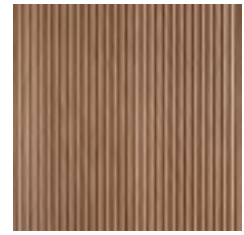
Pepe nero



Naturale



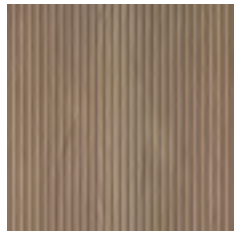
Cumino



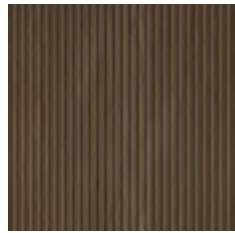
Smoke



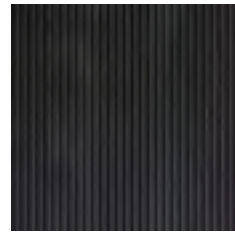
Carbon



Avena



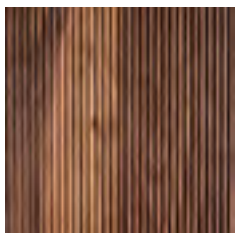
Farro



Anice stellato

## Noce naturale

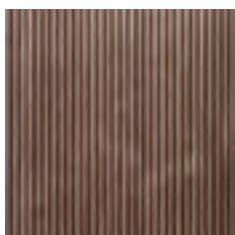
Natural Walnuts/ Noyer naturel



Noce

## Noce tinto acqua

Water stained walnut / Noyer teinté à l'eau



Noce acqua 10



Noce acqua 40



Noce acqua 50

## Legno laccato

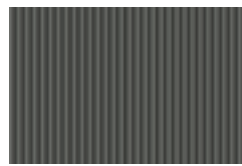
Laquered wood/ bois laqué



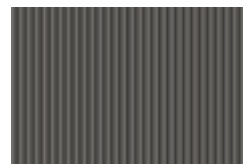
Carbone



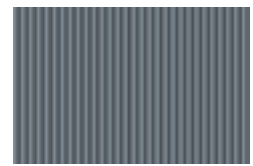
Antracite



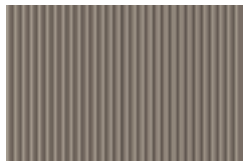
Grigio Londra



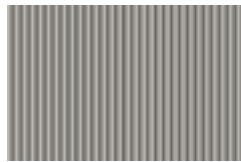
Grigio asparago



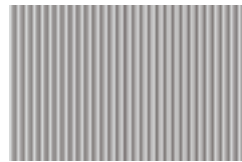
Grigio vaio



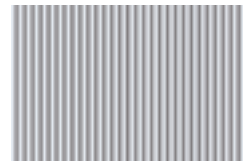
Grigio cenere



Grigio agata



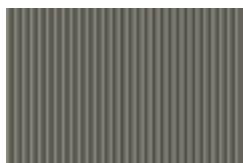
Grigio perla



Ghiaccio



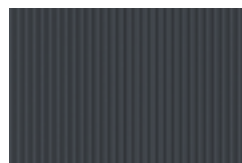
Caffè



Calcestruzzo



Ardesia



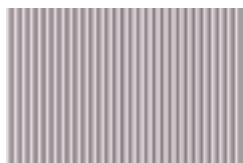
Oceano



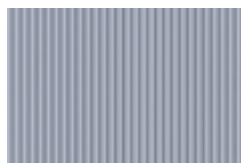
Melanzana



Borgogna



Glicine



Pastello



Carta da zucchero



Terra



Fango



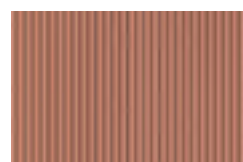
Castoro



Sabbia



Rosa cipria



Mattone



Petrolio



Verde pino



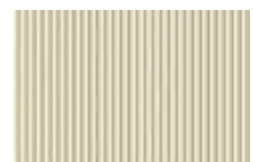
Verde lime



Crema



Conchiglia



Orzo



Vapore



Bianco nuvola



Bianco assoluto



Bianco burro



Bianco fumo



Ral

## Struttura di base

La struttura della cucina passa dalla profondità standard di 60 cm a ben 65 cm. Tale soluzione aumenta la capienza complessiva della base e la profondità del piano, quindi la superficie lavoro. Questa soluzione unita allo zoccolo da 6 cm e la struttura H 84 cm ridefinisce i volumi in cucina.



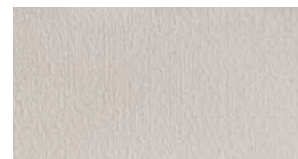
- ★ **Antigraffio**  
Anti-scratch / Inrayable
- ★ **Facile da pulire**  
Easy to clean/ Facile à nettoyer
- ★ **Effetto 3D**  
3D effect / Effet 3D
- ★ **Finitura design**  
High-class finish / Finition design



Bronze



Blanc



## Struttura in Multistrato

Struttura in multistrato marino di pioppo resistente all'acqua e alle deformazioni, personalizzabile con colorazioni esclusive, placcato con laminato Hpl su entrambi i lati.

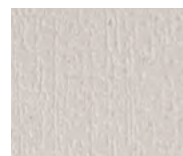


- ★ **Idrorepellente**  
waterproof/ étanche
- ★ **Non subisce deformazioni**  
Anti-deformation  
il ne subit pas de déformations
- ★ **Struttura più leggera**  
lighter structure/ structure plus légère
- ★ **Riciclabile**  
recyclable/ recyclable

Bronze



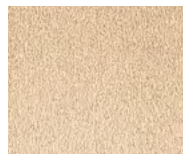
Blanc



Saturno



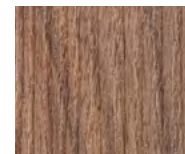
Bronze



Blanc



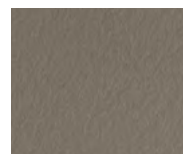
Saturno



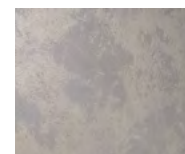
Bronze



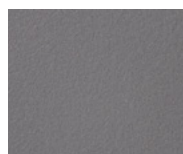
Blanc



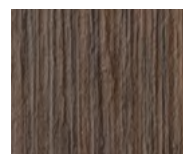
Saturno



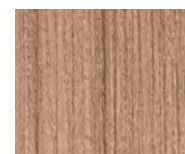
Bronze



Blanc

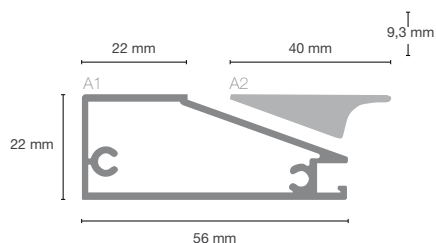


Saturno



## Vetrine con telaio alluminio e vetro fumé

Anta con telaio vetrina in alluminio anodizzato, spessore 22 mm, con vetro fumé. Possibilità di aggiungere la maniglia per gli elementi colonna. È possibile utilizzarla anche come anta tutta altezza nelle colonne Ghost.



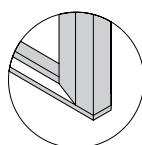
A1: Telaio alluminio  
A2: Maniglia alluminio

Dettaglio telaio anta

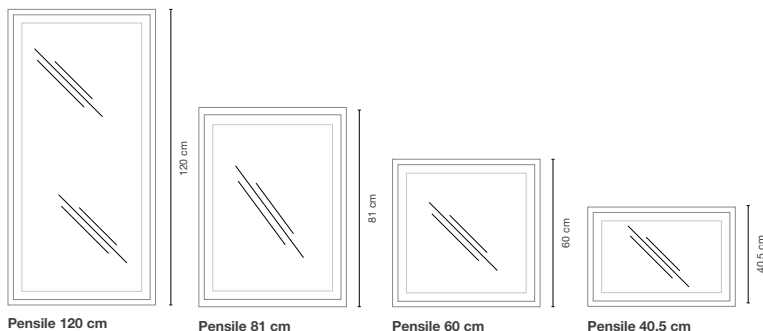
Telaio alluminio anodizzato nero



Telaio alluminio anodizzato champagne



## Anta vetrina per colonna h 261 / h 222 / h 201 / h 141



Pensile 120 cm

Pensile 81 cm

Pensile 60 cm

Pensile 40,5 cm

## Anta vetrina per pensile h 120 / h 81 / h 60 / 40,5



Colonna 261 cm

Colonna 222 cm

Colonna 201 cm

Colonna 141 cm

Dettaglio maniglia a filo per colonna



## Sistemi di apertura

Ares

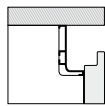
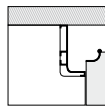
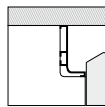
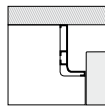
Kea

Dafne

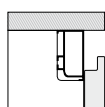
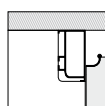
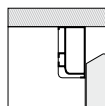
Slim



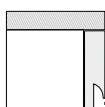
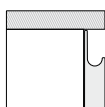
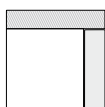
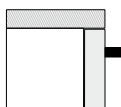
### G-Line



### D-Line



### Handle





**G-LINE**



**Nero anodizzato**



**Inox**



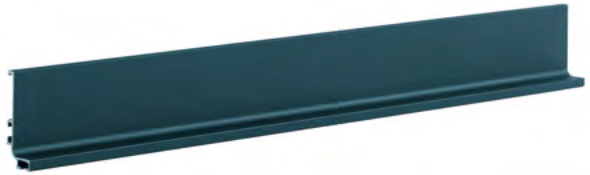
**Bianco opaco**



**Stardust**



**Champagne**



**Ral**



**Laccato Liquid Metal come anta**

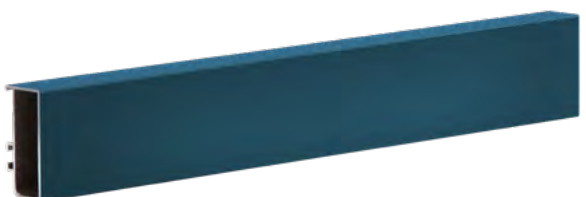
**D-LINE**



**Champagne**



**Impiallacciato anta Rovere nodato e Lux Wood**



**Ral**



**Laccato Liquid Metal come anta**

ZOCCOLI H6/ H10



PVC antracite



Alluminio finitura Inox



Alluminio nero opaco



Alluminio bianco opaco



Alluminio Stardust



Alluminio Champagne



Alluminio impiallacciato



Alluminio Ral

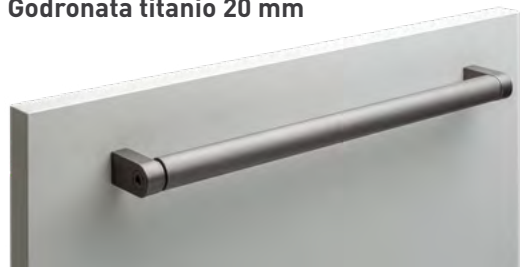


Laccato Liquid Metal come anta

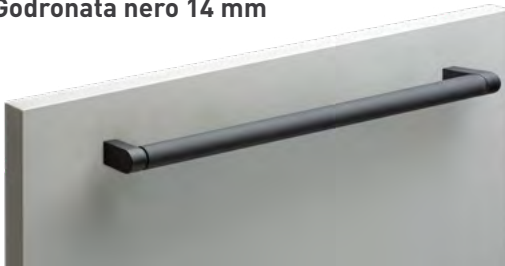
Godronata rame 20 mm



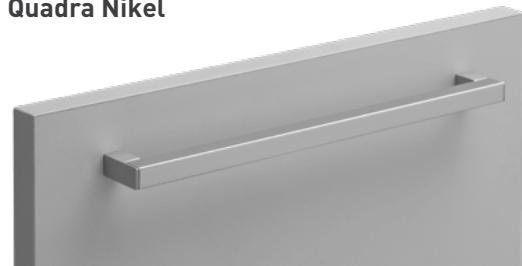
Godronata titanio 20 mm



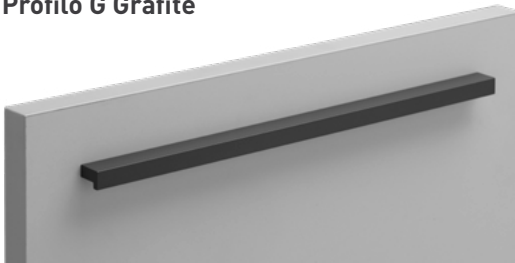
Godronata nero 14 mm



Quadra Nickel



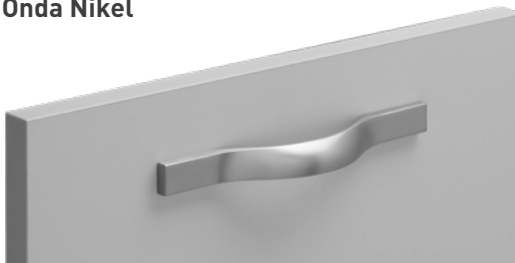
Profilo G Grafite



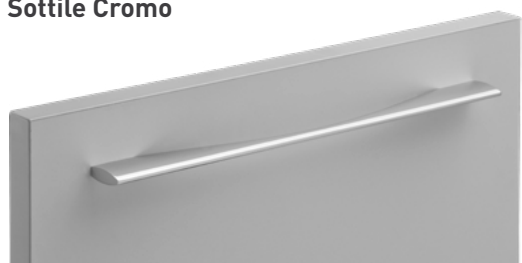
Profilo G Bianco



Onda Nickel



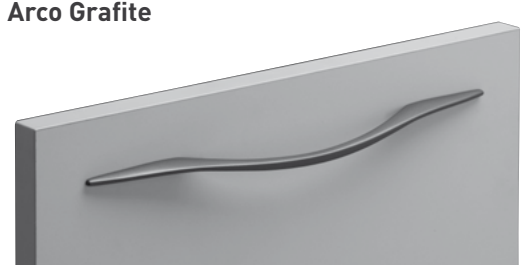
Sottile Cromo



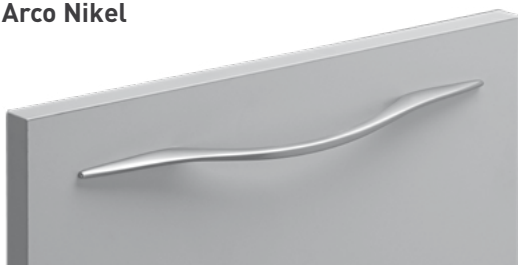
Profilo T Nickel Satin



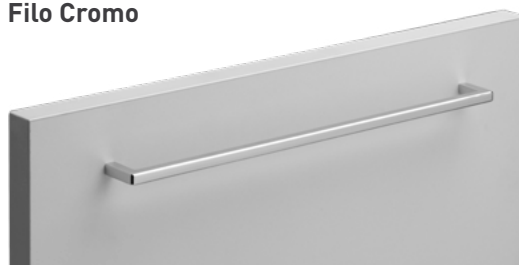
Arco Grafite



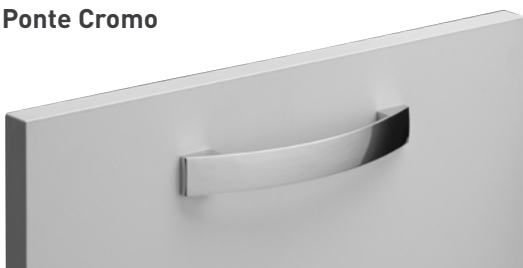
**Arco Nikel**



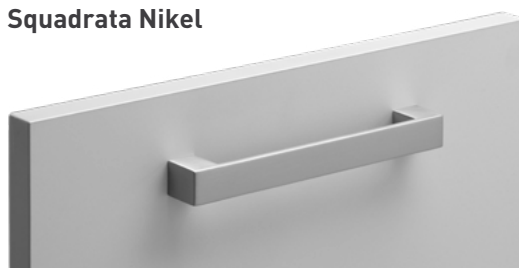
**Filo Cromo**



**Ponte Cromo**



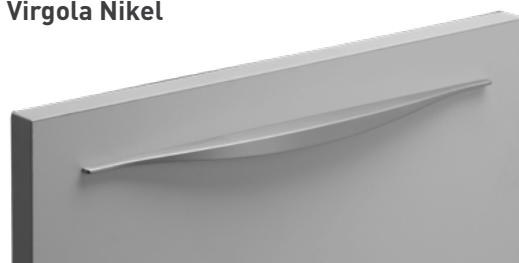
**Squadrata Nikel**



**Parallela Cromo**



**Virgola Nikel**



**Never Peltro Satinato**

