

**nobilia®**

New features journal Collection 2025



**NEW FEATURES 2025**  
KITCHEN, BATHROOM  
AND LIVING AREA





# INNOVATION MEETS INTERIOR

It's in our DNA: We inspire our customers over and over again. True to the motto "next level of innovation", this year's new features are all about innovation, coordinated design and product perfection. After completing our extensive grid change-over for a perfectly coordinated look, in 2025 we are now raising our interiors to the next level of innovation: The kitchen, bathroom and living segment are getting brand-new interiors. Be it state-of-the-art technology, modern design or the dream of more individuality: Our new collection offers you plenty of options for meeting your customer's needs and opening up new potential for sales.

## The highlights of the 2025 collection.

Our innovative drawer system nBOX sets new standards of design and aesthetics, convenience and customisation. The new nBOX system features a straight-lined, minimalist design in elegant slate grey. The narrow drawer frame with a width of just 10.7 millimetres moulds seamlessly with the overall furniture style and is perfect for cross-room designs in kitchens, bathrooms and living rooms. For even greater convenience in handleless plans, nBOX drawers and pull-outs are optionally available with a push-to-open mechanism.

To create a uniform interior for all our furniture segments, we have extensively updated our entire unit interior design, adapting it to a new and consistent style and colouring. The result: A perfect match in style and colour across rooms. To fully complement this look, the colour slate grey is now optionally available as carcass interior décor. And there is yet another continuity advantage where the vertical lines are concerned: Tall units with full-length doors create even more tranquil surfaces in modern designs.

## Trends for any style.

More anti-fingerprint fronts, a new honed lacquer range, vertical wood décors, trendy bronze elements, motif niches with 3D effects you can feel, furniture with genuine wood veneer in the living segment and organic shapes in the bathroom: Experience an exciting selection of new décors, surfaces and designs to upgrade any room!

## Innovation down to the smallest detail.

We are expanding the success story of our Xtra Hob with two new versions and innovative surface technology. In 2025, our brand-new collaboration with Philips Hue let you plan smart, customised lighting concepts.

For more new features and inspiration, check out the following pages.  
Enjoy!



# INNOVATIONS. TRENDS. INSPIRATIONS 2025.



## KITCHEN UPDATE

- 68 Full-length tall unit doors
- 70 Modern seating
- 72 Smart lighting systems
- 76 A trendsetting expansion:  
The Xtra Hob hot plate extractor fan
- 78 Innovative electric appliances
- 80 Stylish sinks and taps



## MORE DESIGN

Our genuine wood veneer furniture in Native Oak offers a plethora of planning options for fully coordinated living space design and exudes an inviting ambiance with its natural charm.

Be it tables, mirrors or hand basins: This year, you can find a wide variety of designs featuring organic shapes with softly curved contours for a modern style.



## MORE THAN KITCHEN

- 86 New living features
- 88 Genuine wood veneer  
stand-alone furniture
- 92 Coffee tables and dining tables
- 94 New bathroom features
- 102 Discontinued products

## NEW VERSATILITY IN DESIGN

- 08 Fronts
- 30 Surround colours
- 32 Worktops
- 34 Handles and recessed handles
- 36 Niche designs
- 40 nBOX drawer system
- 56 Fully coordinated interior upgrade



# A NEW VERSATILITY IN PLANNING

The new features of our 2025 collection will open up an entirely new perspective for you, allowing you to offer your customers unique customisation options they are guaranteed to love. The versatility of our innovative solutions, interior design ideas and exclusive technologies lets you respond even more flexibly and creatively to customer requests and the needs of modern room design.



01.

—  
An innovative expansion:  
Seven additional lacquer  
fronts with anti-fingerprint  
coating

—  
See pg. 08

03.

—  
Highlights that inspire:  
Innovative surfaces  
for the kitchen niche

—  
See pg. 36

02.

—  
Eleven new handle variants –  
from knobs to bar handles

—  
See pg. 34





# FASCINATION ON ALL FRONTS

Fronts define a look, and not just in the kitchen segment. Design, feel, durability or ease of cleaning thanks to anti-fingerprint coating: Our fronts have many appealing qualities. Now we are expanding our range with ten new fronts in top-selling colours and fashionable trend hues in melamine and high-quality genuine lacquer design.



Range no. 357

**SENSO 485** PG 3  
Lacquer,  
premium honed sky

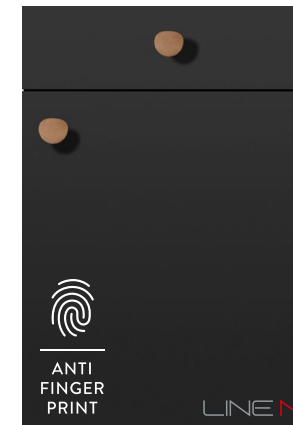
Matching surround:  
Upright panels, plinth



Range no. 357

**SENSO 495** PG 3  
Lacquer,  
premium honed olive

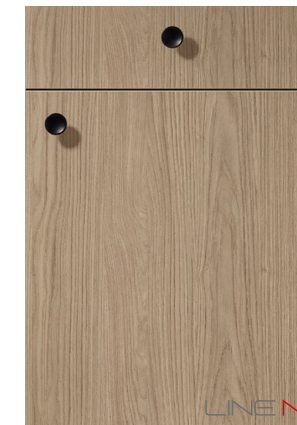
Matching surround:  
Upright panels, plinth



Range no. 357

**SENSO 496** PG 3  
Lacquer,  
premium honed black

Matching surround:  
Carcase, upright panels,  
plinth



Range no. 382

**STRUCTURA 406** PG 3  
Como oak  
reproduction

Matching surround:  
Upright panels, shelf units,  
plinth



Range no. 382

**STRUCTURA 407** PG 3  
Milano walnut  
reproduction

Matching surround:  
Upright panels, shelf units,  
plinth



Range no. 187

**SOFTLINE 507** PG 5  
Lacquer, perfect honed  
alpine white

Matching surround:  
Carcase, upright panels



Range no. 187

**SOFTLINE 509** PG 5  
Lacquer, perfect honed  
white

Matching surround:  
Carcase, upright panels



Range no. 187

**SOFTLINE 510** PG 5  
Lacquer, perfect honed  
ivory

Matching surround:  
Carcase, upright panels



Range no. 187

**SOFTLINE 508** PG 5  
Lacquer, perfect honed  
satin grey

Matching surround:  
Carcase, upright panels



Range no. 497

**NORDIC 788** PG 7  
Lacquer,  
honed sand

Matching surround:  
Carcase, upright panels,  
pilasters units



## SOFT SKY BLUE

2025 is the year for expanding our design horizon: The trend colour sky creates a fresh ambiance with an airy feel. Staged in a minimalist tone-in-tone design, this soft pastel hue reflects the trend of using gentle, tranquil colours.



Range no. 357

**SENSO 485**  
Lacquer,  
premium honed sky

PG 3

Matching surround:  
Upright panels, plinth

This subtle hue is perfect for countless combinations and creates a relaxed ambiance. Sky, an oak décor and shades of grey come together for a beautifully coordinated look.

#### ATTRACTIVE ALL-AROUND!

- Easy to clean thanks to anti-fingerprint coating
- Resistant to common stains
- Insensitive to many cleaners
- Resistant to heat and moisture
- Resistant to micro-scratches, which can also occur during cleaning



**SENSO 485**  
Lacquer,  
premium honed sky

**METAL KNOB 241**  
Stainless steel finish

**CARCASE 194**  
Slate grey

**WORKTOP 361**  
Caspian grey marble  
reproduction





## INSPIRED BY NATURE

Whether in materials or colour: The dream of a more natural ambiance increasingly defines interior design styles, particularly in urban environments. This combination of the popular hue olive with the warm Milano walnut reflects current trends and creates a perfect balance between love of nature and modern design.



Range no. 357

**SENSO 495**  
Lacquer,  
premium honed olive

PG 3

Matching surround:  
Upright panels, plinth

The honed surfaces with anti-fingerprint coating make this kitchen perfect for everyday life and easy to clean – a popular advantage, not just with families.



### INTENSE DEPTH OF COLOUR

Despite the extremely honed surface, the brilliant colours are particularly intense. A special matt finish technology does away with the need for matting agents. Highly pigmented coating improves the colour depth and ensures high colour stability.



**SENSO 495**  
Lacquer,  
premium honed olive

**LINE N RECESSED  
HANDLE 027**  
Black with LED lighting

**CARCASE 127**  
Black

**WORKTOP 399**  
Milano walnut  
reproduction

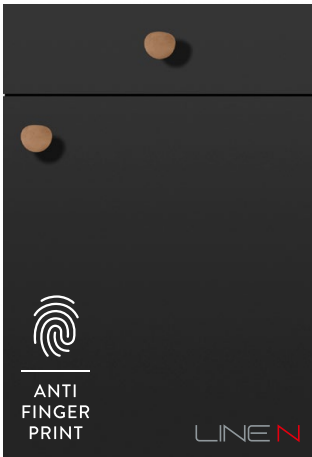
**NICHE CLADDING 339**  
Décor stripewood dark



14 · 15

UPGRADE FOR BLACK

Be it in fashion, interior design or the automotive industry: Black remains in style. Just like matt surfaces. That makes black matt a particularly popular variant of this statement colour. It focuses only on what's important: elegance and timeless charm. The anti-fingerprint coating keeps the fronts well-maintained at all times and makes them a beautiful eye-catcher - entirely free of fingerprints.



Range no. 357

**SENSO 496**      **PG 3**  
Lacquer,  
premium honed black  
—  
Matching surround:  
Carcase, upright panels,  
plinth



Well-placed highlights:  
The versatile bronze  
elements of our new  
collection truly get  
to shine in a black  
environment and add  
a touch of elegance to  
the look in a particularly  
ingenious way.



[www.blauer-engel.de/uz38](http://www.blauer-engel.de/uz38)

SUSTAINABLE

The melamine chipboard consists of 100 % recycled material. It is produced without the use of virgin fibres. Moreover, the surface is completely recyclable so that it can be reused at the end of its service life. For that reason, the surface has been certified with the 'Blauer Engel' (Blue Angel) eco label.

SENSO 496  
Lacquer,  
premium honed black

LINE N RECESSED  
HANDLE 012  
Bronze metallic colour

CARCASE 127  
Black

WORKTOP 790  
Xtra Ceramic  
Plain Black





# FINE LINES WITH A VERTICAL GRAIN

Whether in the kitchen, bathroom or living room: Wood is a key element for great design. Our Como oak reproduction is a fashionable eye-catcher with an elegant natural look. In this design, authenticity and a natural style meet a new simplicity and versatile design options: The natural, vertical grain adds a touch of modern elegance, while the soft colour gradients make it perfect for a plethora of colour and material combinations. Together with white fronts, its light, friendly personality truly comes into its own.



Range no. 382

**STRUCTURA 406**    **PG 3**

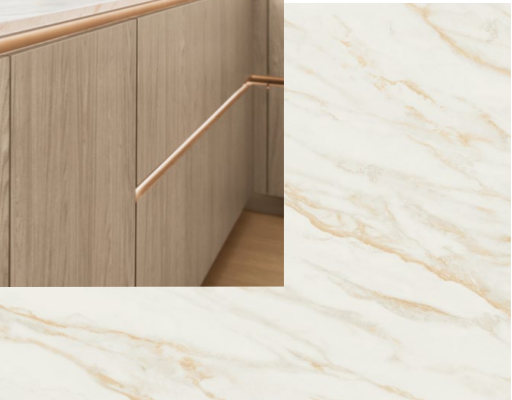
**Como oak reproduction**

—

Matching surround:  
Upright panels, shelf units, plinth

## QUALITY YOU CAN FEEL – THANKS TO TEXTURED SURFACES

The textured surface of the front gives it an authentic feel, making it barely distinguishable from its genuine wood counterpart. The durable melamine design makes these fronts particularly suitable for everyday life and very easy to clean.



Wood décors with a vertical grain look even better on our new full-length tall unit doors. The handleless design underlines the minimalist look and creates an uninterrupted aesthetic.

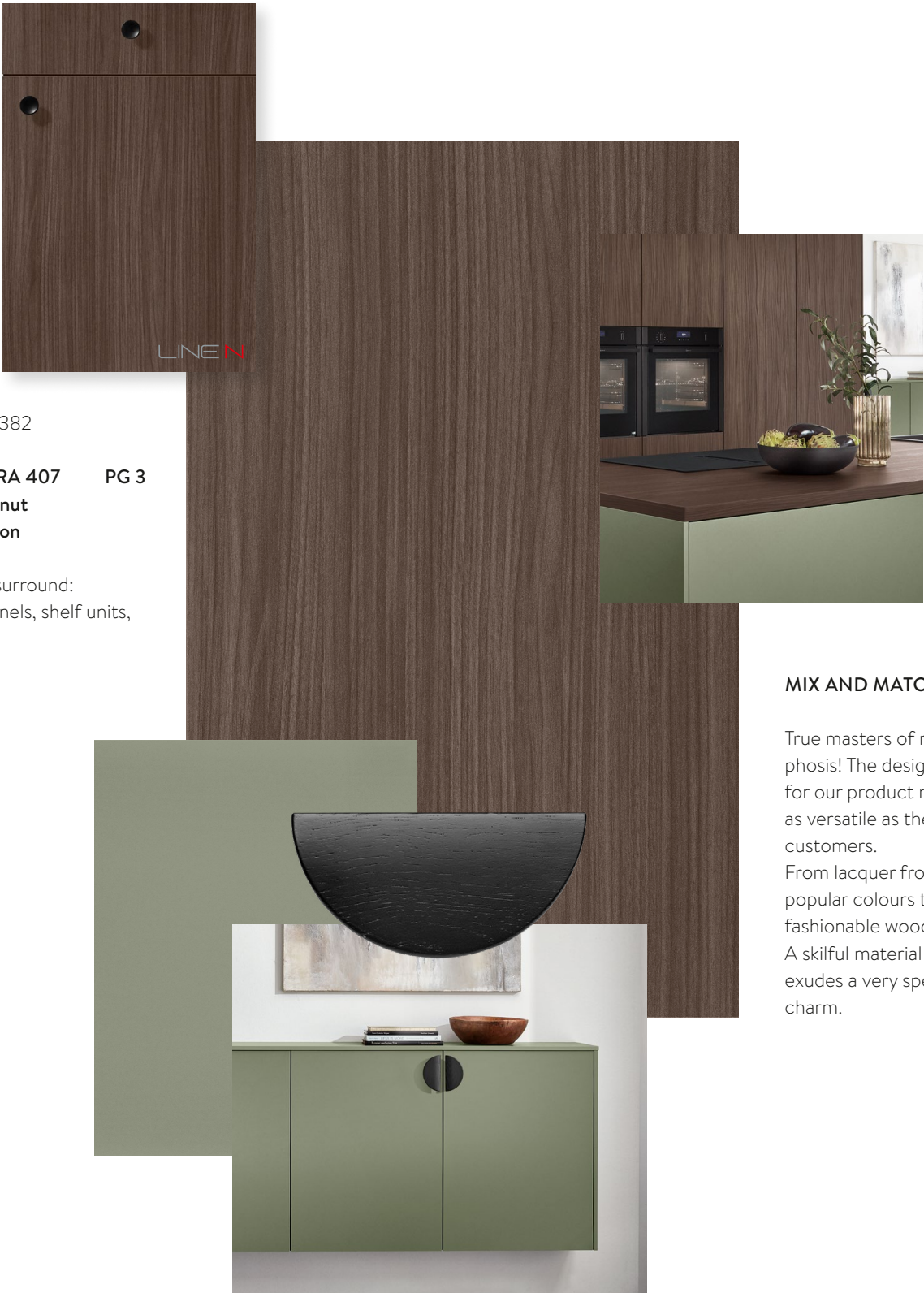


STRUCTURA 406 Como oak reproduction	LINE N RECESSED HANDLE 012 Bronze metallic colour	CARCASE 106 White	WORKTOP 324 Carrara bronze marble reproduction
--	---	----------------------	---



# FIRST-CLASS ELEGANCE

Modern Italian design is known for good taste and effortless, practical casual stylishness! This modern Italian design finds a striking reflection in the aesthetics of Milano walnut: with a vertical grain, subtle texture and dark pores full of character. Combining Milano walnut and olive creates a classy feel-good ambience across rooms and perfectly balances a natural style with elegance and mediterranean charm.



Range no. 382

**STRUCTURA 407**    **PG 3**

**Milano walnut reproduction**

—

Matching surround:  
Upright panels, shelf units,  
plinth

## MIX AND MATCH

True masters of metamorphosis! The design options for our product range are as versatile as the tastes of customers. From lacquer fronts in popular colours to fashionable wood looks: A skilful material mix exudes a very special charm.

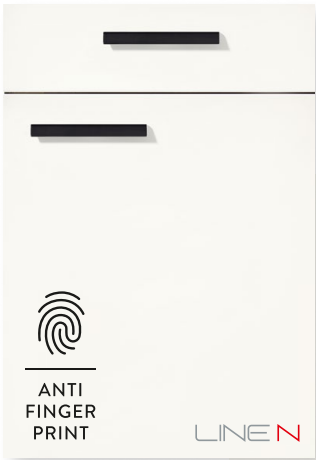


STRUCTURA 407 Milano walnut reproduction	PUSH-TO-OPEN	WOODEN HANDLE 129 Black oak	CARCASE 194 Slate grey	WORKTOP 399 Milano walnut reproduction
---	--------------	--------------------------------	---------------------------	---



# INNOVATIVE SURFACES IN PERFECT HONED

New in our product range: Our new range in perfect honed lacquer will impress you with advanced anti-fingerprint properties and is defined by its robustness, long life and easy-care properties. A perfect combination of beauty and function! Fronts lacquered on all sides are the ideal choice for a classy design. The special soft matt surface gives the fronts a velvety elegance, for a benefit you can see and feel! An edge radius of just 1.8 mm gives this product range a look of modern elegance.

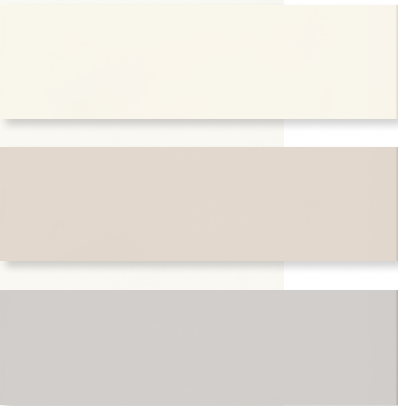


Range no. 187

**SOFTLINE 507**      **PG 5**  
 Lacquer, perfect honed  
 alpine white

—  
 Matching surround:  
 Carcase, upright panels

## ADDITIONAL NEW COLOUR VARIATIONS



**SOFTLINE 509**  
 Lacquer, perfect  
 honed white

**SOFTLINE 510**  
 Lacquer, perfect  
 honed ivory

**SOFTLINE 508**  
 Lacquer, perfect  
 honed satin grey



You want a light-coloured  
 ambiance, but with a certain  
 something? For those who love  
 creativity, the minimalist aesthetic  
 combines beautifully with an  
 artistic eye-catcher. A deliberately  
 expressive design element like our  
 new niche cladding creates a unique  
 yet relaxed look.

**SOFTLINE 507**  
 Lacquer, perfect  
 honed alpine white

**BAR HANDLE 690**  
 Alpine white

**CARCASE 193**  
 Alpine white

**WORKTOP 361**  
 Caspian grey marble  
 reproduction

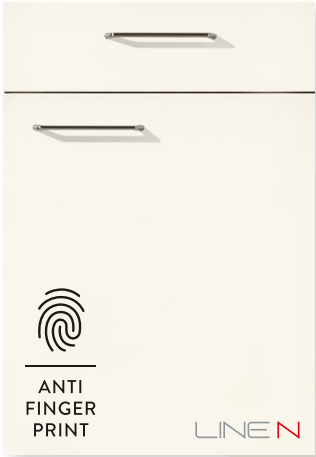
**NICHE CLADDING 584**  
 Décor diagonal tile, green





NATURAL COMPOSITION

A coordinated colour scheme of white fronts combined with light natural hues or wooden elements improves the feel-good ambiance of a space. Bronze details give the design a modern touch. The innovative anti-fingerprint coating makes the white fronts easy to maintain and keeps them clean and free of fingerprints. The niche cladding with a 3D design features not just an impressive grooved look reflecting current trends, but a texture you can actually feel.



Range no. 187

**SOFTLINE 509**      **PG 5**  
Lacquer, perfect honed white

—  
Matching surround:  
Carcase, upright panels



Be it the Carrara bronze marble reproduction worktop or fascinating bronze elements in the tap and bar handle: Metal highlights add a modern touch and go beautifully with a variety of different styles.



Natural wood beauty, even in the dining area – our genuine wood veneer dining tables in Native Oak make any space feel extra-cosy.



SOFTLINE 509 Lacquer, perfect honed white	BAR HANDLE 810 Bronze metallic colour	CARCASE 106 White	WORKTOP 324 Carrara bronze marble reproduction	NICHE CLADDING 255 Décor stripewood light
--	--	----------------------	---	--



ELEGANT PROPERTIES

The simple front design and soft colour ivory underline the elegant restraint of this plan. The honed surface creates a tranquil atmosphere without bothersome light reflections. Lacquered on five sides and highly robust, these fronts are designed to impress with their flawless look.



Range no. 187

**SOFTLINE 510**      **PG 5**  
Lacquer, perfect honed ivory

—  
Matching surround:  
Carcase, upright panels



High abrasion resistance and easy-care properties thanks to the anti-fingerprint coating mean that the beauty of these surfaces is sure to last for a long time and simplify everyday use of the kitchen.



SOFTLINE 510  
Lacquer, perfect honed ivory

METAL HANDLE 228  
Bronze colour

CARCASE 120  
Ivory matt

WORKTOP 350  
Flamed finish bronze granite reproduction



# SUBTLE ELEGANCE

Bright enthusiasm! Satin grey is both fashionable and timeless, making it a welcome alternative to white fronts. This subtle hue unfolds its full potential when used for large surfaces.



Range no. 187

**SOFTLINE 508** PG 5  
Lacquer, perfect honed satin grey

—  
Matching surround:  
Carcase, upright panels



Our Sierra oak décor exudes natural elegance and is the perfect element for harmonious combinations.



Satin grey fronts and black highlights create an elegant, high-contrast appearance.



## NEW FRONT RADIUS

More modern design and clean lines thanks to an edge radius of just 1.8 mm.



**SOFTLINE 508**  
Lacquer, perfect honed satin grey

**RAILING HANDLE 400**  
Black

**CARCASE 070**  
Satin grey

**WORKTOP 198**  
Sierra oak reproduction  
Now also available as Slim Line worktop



SCANDINAVIAN CHARM

Simple yet captivating: With elegant restraint, reduced shapes and muted natural hues, this modern Scandi look creates an amazing feel-good ambiance.  
The new framed front in sand-coloured honed lacquer underlines the scandinavian style. This is the perfect design for all those who prefer a bright ambiance full of stylish serenity in their space.

Range no. 497

**NORDIC 788**      **PG 7**  
**Lacquer,**  
**honed sand**  
—  
Matching surround:  
Carcase, upright panels,  
pilasters units



The well-coordinated  
colour scheme of bright  
and natural hues adds a  
calming ambiance to the  
design.



NORDIC 788 Lacquer, honed sand	SCREW-ON HANDLE RECESS 055 Stainless steel finish	CARCASE 122 Sand	WORKTOP 349 Sand grey travertine reproduction
--------------------------------------	--	---------------------	--



# AN IDEAL COMBINATION

Beauty all around! Our new surround colours let upright panels, plinths and shelf units meld seamlessly with our new fronts, creating a beautifully coordinated overall design.



**UPRIGHT PANEL  
COLOUR 485**  
Lacquer, premium honed sky  
• Also available as plinth  
colour 032



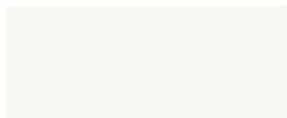
**UPRIGHT PANEL  
COLOUR 495**  
Lacquer, premium honed olive  
• Also available as plinth  
colour 033



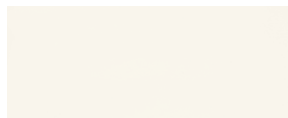
**UPRIGHT PANEL  
COLOUR 496**  
Lacquer,  
premium honed black



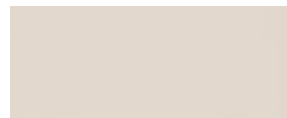
**UPRIGHT PANEL  
COLOUR 788**  
Lacquer, perfect honed sand



**UPRIGHT PANEL  
COLOUR 507**  
Lacquer, perfect honed  
alpine white



**UPRIGHT PANEL  
COLOUR 509**  
Lacquer, perfect honed  
white



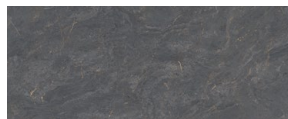
**UPRIGHT PANEL  
COLOUR 510**  
Lacquer, perfect honed  
ivory



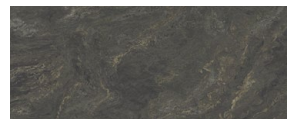
**UPRIGHT PANEL  
COLOUR 508**  
Lacquer, perfect honed  
satin grey



**UPRIGHT PANEL  
COLOUR 324**  
Carrara bronze marble  
reproduction



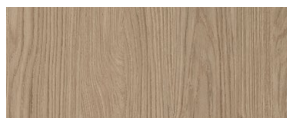
**UPRIGHT PANEL  
COLOUR 350**  
Flamed finish bronze  
granite reproduction



**UPRIGHT PANEL  
COLOUR 351**  
Green quartzite  
reproduction



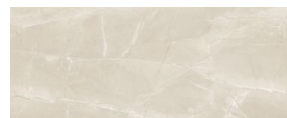
**UPRIGHT PANEL  
COLOUR 349**  
Sand grey travertine  
reproduction



**UPRIGHT PANEL  
COLOUR 362**  
Como oak reproduction  
• Also available as plinth  
and shelf unit colour



**UPRIGHT PANEL  
COLOUR 399**  
Milano walnut reproduction  
• Also available as plinth  
and shelf unit colour



**UPRIGHT PANEL  
COLOUR 361**  
Caspian grey marble  
reproduction



For a consistent look in  
slate grey the carcass  
interior décor is now  
optionally available in slate  
grey for a surcharge.

**MP-KID**  
**Surcharge for carcass interior décor  
in 194 slate grey**  
A surcharge is invoiced per unit.

• Can only be selected with carcass  
décor 194 slate grey (outside)

If you wish to order the surcharge for  
the entire commission, the surcharge  
can be added to the order header data  
when placing the order.



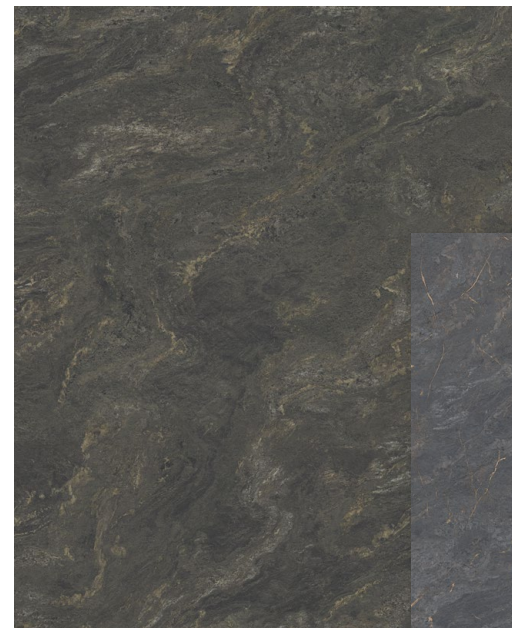
# NATURAL ELEGANCE: OUR NEW DÉCORS

We are expanding our worktop range with seven new décors that combine perfectly with all existing designs.

Convenient and naturally elegant: The new worktops in marble, granite and wood reproduction décors feature an impressive natural design and are easy to use. The perfect choice for kitchens, bathrooms and living rooms.



**WORKTOP DÉCOR 349**  
Sand grey travertine  
reproduction  
—  
16 / 38 / 100 mm



**WORKTOP DÉCOR 351**  
Green quartzite  
reproduction  
—  
38 / 100 mm

**WORKTOP DÉCOR 350**  
Flamed finish bronze granite  
reproduction  
—  
38 / 100 mm



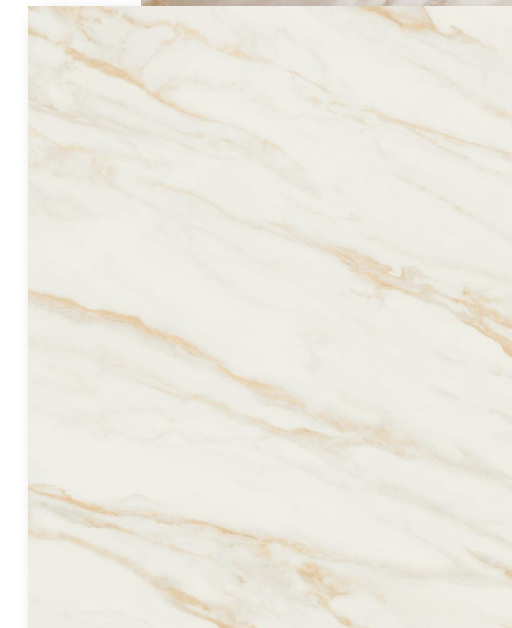
**WORKTOP DÉCOR 361**  
Caspian grey marble  
reproduction  
—  
38 / 100 mm



**WORKTOP DÉCOR 362**  
Como oak  
reproduction  
—  
38 / 100 mm



**WORKTOP DÉCOR 399**  
Milano walnut  
reproduction  
—  
38 / 100 mm



**WORKTOP DÉCOR 324**  
Carrara bronze marble  
reproduction  
—  
16 / 38 / 100 mm



**WORKTOP DÉCOR 198**  
Sierra oak  
reproduction  
—  
16 / 38 / 100 mm

**Now also available as  
Slim Line in 16 mm.**



# UNIQUE DESIGN: WE HAVE A HANDLE ON IT

Small details with great effect! From a wood look through organic shapes to modern materials like bronze:  
Our eleven new handles give you even more freedom to underline your unique style with beautiful  
details – from knobs all the way to bar handles.



**241 METAL KNOB**  
Stainless steel finish



**242 METAL KNOB**  
Black



**244 METAL KNOB**  
Black



**246 METAL KNOB**  
Bronze metallic colour



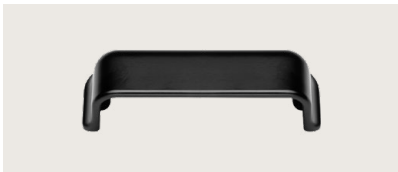
**129 WOODEN HANDLE  
(SURCHARGE 7945)**  
Black oak  
64 mm



**128 WOODEN HANDLE  
(SURCHARGE 7945)**  
Oak  
64 mm



**055 SCREW-ON HANDLE RECESS**  
Stainless steel finish  
96 mm



**057 SCREW-ON HANDLE RECESS**  
Black  
96 mm



**400 RAILING HANDLE  
(SURCHARGE 7945)**  
Black  
184 – 1481 mm



**810 BAR HANDLE  
(SURCHARGE 7946)**  
Bronze metallic colour  
in door width



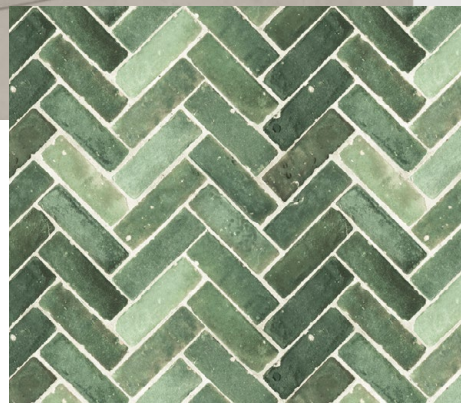
**012 LINE N RECESSED HANDLE**  
Bronze metallic colour





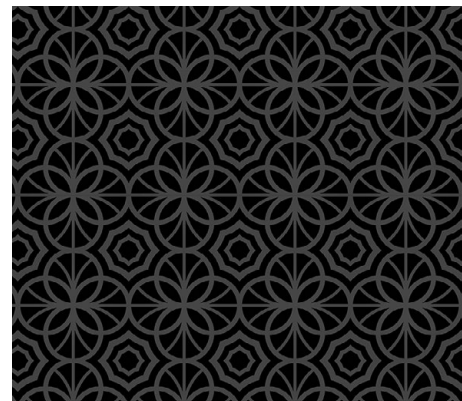
# NICHES FOR EVERY TASTE

Visual highlights that inspire: Be it digital print, motifs with 3D effects you can feel and a tactile texture, in bronze metallic or in mirror décors - our niche solutions offer impressive options for design.



**NVM 584**  
Décor diagonal tile, green  
—  
3D digital print

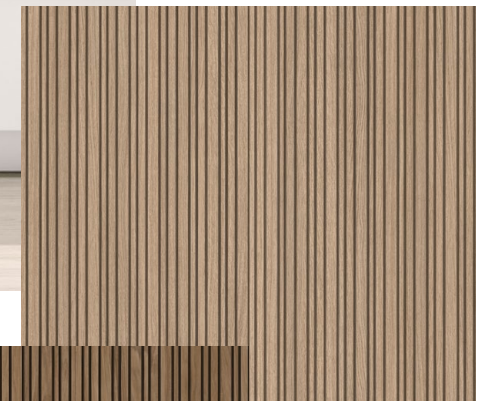
**NVM 579**  
Décor mosaic tile faro, warm grey  
—  
3D digital print



**NVM 577**  
Décor kaleidoscope black  
—  
3D digital print



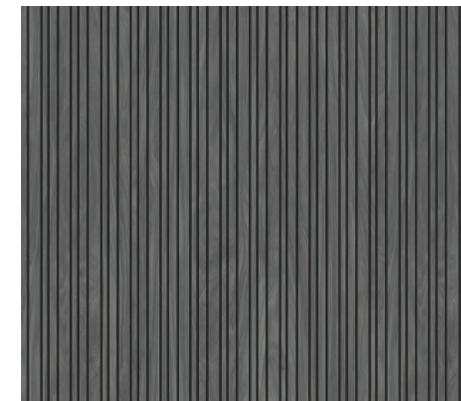
**NVM 255**  
Décor stripewood light  
—  
3D texture



These 3D motifs with a tactile texture add a whole new depth to a room design and offer visual and haptic experiences that inspire.



**NVM 339**  
Décor stripewood dark  
—  
3D texture



**NVM 283**  
Décor stripewood slate grey  
—  
3D texture



**NVM 284**  
Décor stripewood taupe  
—  
3D texture





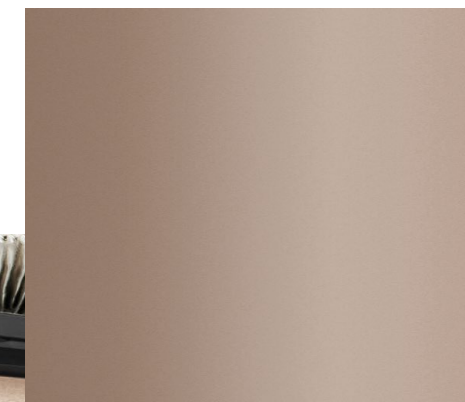


NVG 051  
Mirror,  
slate grey  
—  
Glass



NVG 050  
Mirror,  
bronze colour  
—  
Glass

NV 211  
Bronze  
metallic colour



Our new mirror décors create entirely new options for setting the stage in a room. They reflect light in fascinating ways, making the room feel wide-open and bright.

The niche cladding in bronze metallic colour is the perfect choice for adding a touch of style to the room. For a perfect addition, we offer the nBOX with a bronze design cover and profile, the new Xtra Hob with bronze highlights, the matching sink, tap and other bronze elements.





# A DRAWER FOR A NEW ERA



More Design. More Comfort. More Choices. The exclusive nBOX drawer system is an innovation we developed in-house to set new standards in the design of unit interiors. It lets you offer your customers premium design and technology as standard at attractive prices. The straight-lined design in classy slate grey melds seamlessly into the overall look of the furniture and is perfect for cross-room designs in kitchens, bathrooms and living rooms. The concealed drawer guide and the optional push-to-open function leave nothing to be desired where convenience and technology are concerned. Moreover, the nBOX opens up a whole new world of freedom in design.

Discover the next level of our collection: We have adapted the complete interior of our furniture to the nBOX in style and colour. The result: A fully-coordinated design that is sure to impress in any room.



# MORE DESIGN FOCUS ON MINIMALIST AESTHETICS

Our new drawer system embodies minimalism in simple perfection.  
With its narrow frame, the nBOX features a fascinatingly clean, cubic style.  
The slate grey colour gives the drawer timeless elegance.



## BEAUTY IN SLATE GREY

Dark slate grey exudes elegance and is the foundation for an adaptation of the entire interior range throughout all furniture segments.

## A DELICATE FRAME

Subtle, minimalist features.  
This narrow, timeless and cubic frame of just 10.7 mm creates a delicate, modern appearance and melds seamlessly into the overall look.

## MORE THAN KITCHEN

Its clean architectural design makes the nBOX perfect for kitchens, bathrooms and living rooms and for visually linking the rooms with each other.

## THE NEW SERIAL STANDARD

The sophisticated premium design of this drawer defines our entire pull-out system and unit interior design in style and colour. Benefit from a uniform look, fully coordinated down to the smallest details.



# MORE COMFORT FLAWLESS FUNCTIONS

Convenient versatility of function and innovative technology, perfected down to the smallest detail: Experience high-tech with maximum precision in minimum space. The nBOX drawer makes ideal use of the available space thanks to a narrow frame and concealed guide underneath the drawer. For even greater convenience, the nBOX is available with a push-to-open opening mechanism for handleless designs.

## CUSTOMISED LOOK

nBOX drawers and pull-outs offer a plethora of customisation options.

## MORE STORAGE SPACE

By combining the narrow frame and underframe rail, the nBOX makes perfect use of the available space.

## PERFECT SMOOTHNESS

The innovative rail ensures a perfectly smooth motion and side stability, even with high loads.

## UP TO 70 KG TOTAL LOAD-BEARING CAPACITY

With its exceptional load-bearing capacity, the nBOX is not just a visual highlight but a great improvement to everyday convenience.

## SIMPLE ADJUSTMENT

For a perfect gap pattern, incl. convenient tilt angle adjustment.

## PUSH-TO-OPEN

An optional push-to-open function makes the nBOX the perfect solution for handleless designs.

## CONCEALED TECHNOLOGY

The concealed drawer guide is hidden with maximum precision under the ultra-narrow frame.



# MORE CHOICES ONE SYSTEM – A WORLD OF DESIGN

But to give you the greatest possible freedom in planning, we have created a variety of options for our new drawer system. More selection, more flexibility – the innovative nBOX pull-out system opens up a whole new world of design. The nBOX system gives you the choice of three different variations: the serial standard with a rectangular railing, the optional design with a glass side using grey glass or the closed pull-out box. If you would like to order the new nBOX equipment options for the entire commission, you can select them in the header level when placing the order.

This makes placing your order even more convenient.



## PULL-OUT WITH RAILING AND GLASS SIDE MP-GLAS (7915)

- Glass insert using grey glass (8 mm TSG)
- A surcharge is invoiced per (internal) pull-out
- The surcharge can also be entered as header information for the entire commission in the order header data.

## SERIAL STANDARD

The pull-out comes standard with a rectangular railing.

## PULL-OUT BOX WITH CLOSED SIDE MP-BOX (7905)

- A surcharge is invoiced per (internal) pull-out
- The surcharge can also be entered as header information for the entire commission in the order header data.



# MORE CHOICES MORE COMBINATION FLEXIBILITY

Our nBOX gives you more options to customise and design your plans in unique ways. You can even adapt internal drawers and pull-outs to your vision. In addition to different versions of the pull-out side equipped with a railing, glass side, or a high pull-out box, internal drawers and pull-outs also permit adaptation of the front panel for improved appearance and function.

The standard design is a wooden panel, optionally available designs include a design glass panel or a closed design panel made of plastic.

**WOODEN PANEL**

—

Standard for internal drawers and internal pull-outs



**DESIGN GLASS PANEL**  
MP-DGBLEN (7925)

—

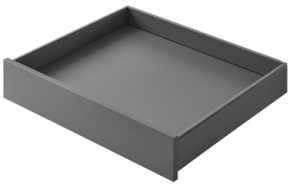
Optional for surcharge:  
Design glass panel  
Surcharge: MP-DGBLEN (7925)

The equipment options can also be entered as header information for the entire commission.

**DESIGN PANEL**  
MP-DBLEN (7935)

—

Optional for surcharge:  
Design panel  
Surcharge: MP-DBLEN (7935)



**INTERNAL DRAWER**

—

Available with

- Wooden panel (standard)
- Design panel

Surcharge:  
MP-DBLEN (7935)



**INTERNAL PULL-OUT WITH RAILING**

—

Available with

- Wooden panel (standard)
- Design glass panel

Surcharge:  
MP-DGBLEN (7925)



**INTERNAL PULL-OUT WITH RAILING AND GLASS SIDE**  
MP-GLAS (7915)

—

Available with

- Wooden panel (standard)
- Design glass panel

Surcharge:  
MP-DGBLEN (7925)



**INTERNAL PULL-OUT WITH BOX**  
MP-BOX (7905)

—

Available with

- Wooden panel (standard)
- Design panel
- Design glass panel

Surcharge: MP-DBLEN (7935)  
Surcharge: MP-DGBLEN (7925)



# MORE COMFORT PUSH-TO-OPEN FOR HANDLELESS DESIGNS

The push-to-open system makes the nBOX the perfect solution for handleless designs:  
Effortless opening and soft, cushioned closing – pure convenience in its most beautiful form!  
Larder and Cargo tall units can also be operated using eTouch.



For construction reasons there are some units that are not available with PTOSA. They are marked with this symbol in the sales manual.

On high pull-out fronts, the opening support mechanism is only triggered from the centre of the front and can therefore be opened with a knee.



## PUSH-TO-OPEN MP-PTOSA (7962)

Mechanical opening support mechanism for drawers, pull-outs, larder units Junior and side pull-outs

- A surcharge is invoiced per drawer / pull-out. Within one unit, either all or no drawers and pull-outs can be equipped with push-to-open.
- All doors on the same type come standard with a handle and without push-to-open. If required, please order without handle and handle holes and with the desired opening support mechanism.
- The data can be entered once in the order header and then used for the entire commission.

PTOSA cannot be retrofitted.

## TALL UNITS CARGO HC\* AND LARDER UNITS HA\* ETOUCH-EU (5997)

- Electrical opening support mechanism eTouch
- Installation on site







# MORE CHOICES UNIQUE DESIGN OPTIONS

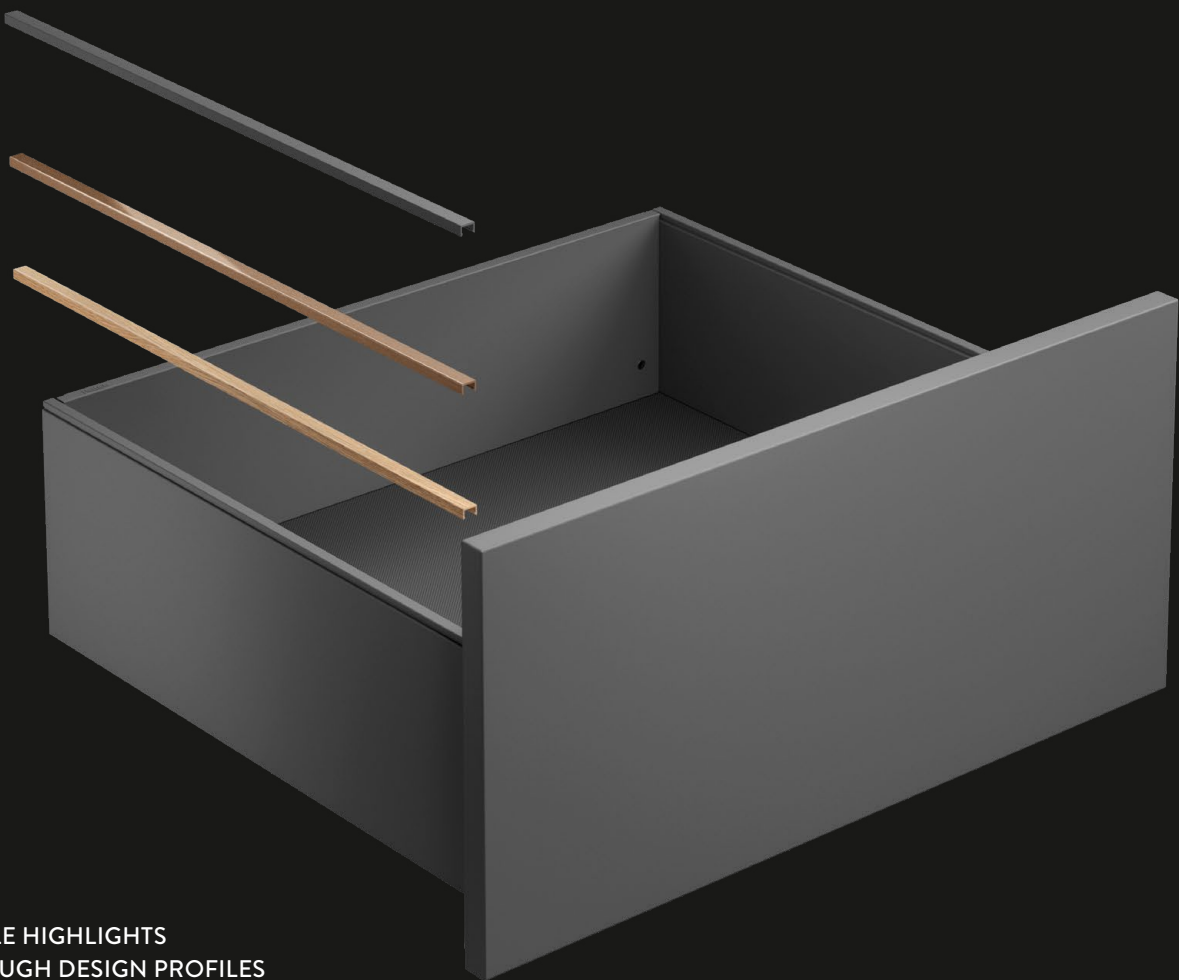
A small detail for great effect: The nBOX system offers brand-new unique design options in the furniture interior: Whether you're looking for a subtle highlight or a completely new look, our design profiles and design covers make it possible to create a wide range of design variants in three trend colours: A minimalist design in slate grey, a tranquil natural look in Sierra oak or an exclusive extravagant style in bronze metallic colour. Attaching and replacing covers and profiles is simple and requires no tools. With these options, nBOX has a matching interior design for any lifestyle and any space. Select your style!

## THE RIGHT COLOUR FOR ANY STYLE

Slate grey is one of the most important shades of grey in our product range. With its minimalist, architectural look, this dark hue emphasises the premium design of the nBOX.

Sierra oak creates a natural look. This colour was adapted to our top-selling wood hue and beautifully matches all cosy styles.

Bronze is a classy metal hue that is extremely fashionable. It exudes warmth and adds a touch of elegance to any design.



### SUBTLE HIGHLIGHTS THROUGH DESIGN PROFILES

Design profiles are fitted as a decorative strip on top to act as a beautiful eye-catcher, giving the slate grey drawers and pull-outs either a consistent visual appearance or adding a special highlight.

Available in three colours:  
P194 Slate grey  
P198 Sierra oak reproduction  
P211 Bronze metallic colour

If you wish to order surcharges for the entire commission, the surcharges can be added to the order header data when placing the order.



### COMPLETELY NEW LOOK THROUGH DESIGN COVERS

Design covers give the entire drawer or pull-out side a completely new look and integrate perfectly in the furniture design.

Available in two colours:  
C198 Sierra oak reproduction  
C211 Bronze metallic colour



## DESIGN COVERS AND DESIGN PROFILES

Design that adapts – exclusively from us! Designed tone-in-tone with slate grey profiles or as a stylish highlight with profiles and covers in bronze or Sierra oak: The nBOX offers a plethora of options for coordinating the design of kitchens, bathrooms and living rooms.



### DESIGN PROFILES MP-DPRO (7918)

- Can be used in all (internal) drawers and (internal) pull-outs.
- A surcharge is invoiced per (internal) drawer and (internal) pull-out.
- Not possible for (internal) pull-outs with glass side (MP-GLAS) and low frame (MP-NIEZA).
- The design profiles are available in 3 colours and 3 depths (300, 400 and 500 mm).



**DESIGN PROFILE P198**  
Sierra oak reproduction



**DESIGN PROFILE P211**  
Bronze metallic colour



**DESIGN PROFILE P194**  
Slate grey

### DESIGN COVER MP-DCOV (7923)

- Can be used in all (internal) drawers and (internal) pull-outs.
- A surcharge is invoiced per (internal) drawer and (internal) pull-out.
- Not possible for (internal) pull-outs with glass side (MP-GLAS) and low frame (MP-NIEZA).
- The design covers are available in 2 different heights and 2 colour variants.



**DESIGN COVER C198**  
Sierra oak reproduction



**DESIGN COVER C211**  
Bronze metallic colour





# A PERFECT MATCH

The elegant premium design of the nBOX continues with a cubic style and slate grey hue into the interior of our units and pull-outs. Whether you're choosing a drawer, pull-out, larder unit or half corner units with swivel pull-outs: We have adapted all elements of our product range perfectly to each other to create a fully coordinated look.



## EXCLUSIVE TONE-IN-TONE DESIGN – CARCASE INTERIOR DÉCOR IN SLATE GREY MP-KID (7947)

- For a consistent look in slate grey, the carcase interior décor is optionally available in slate grey for a surcharge.
- The interior décor can only be selected with carcase décor 194 Slate grey (outside).
- A surcharge MP-KID (7947) is charged per unit.
- The variant with the white interior décor will remain the attractively priced standard design for all carcase décors.
- All units that already come with the same décor on the inside and outside by default are exempt from the surcharge, for instance shelf units, roll-up front units, glass units, sliding door units, etc.

Not possible for corner units and units with a Z-shaped chamfer.



If you wish to order them for the entire commission, the surcharges can be added to the order header data when placing the order.



# FOR A WELL-COORDINATED INTERIOR

Subtlety and beauty in slate grey: The straight-lined premium design of the nBOX continues consistently throughout the interior of our units and pull-outs and even includes functional fittings and accessories. For a harmonious and stylish look in our entire interior.



CARGO PANTRY



TALL UNIT WITH  
INTERNAL PULL-OUTS



TALL UNIT WITH  
LARDER PULL-OUT



TALL UNIT ORGANISER SYSTEM  
LAUNDRY AREA



BROOM AND  
APPLIANCE UNIT



WALL UNIT iMOVE



WALL UNIT WITH SPICE RACK  
AND CANISTERS

## NEW DESIGN FOR ALL FUNCTIONAL FITTINGS INSIDE THE FURNITURE

- The colour and geometry of the nBOX system is also used consistently for all functional fittings and accessories in the interior.
- Drawer and pull-out organisers are adapted to the new dimensions.
- Larder units, Cargos, half corner units with integrated accessories are equipped with new hanging baskets, based on the nBOX design.
- Metal boxes are supplied with non-slip mats.



TALL UNIT  
LAUNDRY AREA WITH  
LAUNDRY BASKET TABLAR





## NEW DESIGN FOR ALL FUNCTIONAL FITTINGS

**PULL-OUT UNIT  
WITH BAGUETTE UNIT**

—  
For a width of 150 and 200 mm  
Metal basket new in shape and  
colour Incl. non-slip mat.

**BASE UNIT WITH  
LARDER PULL-OUT JUNIOR  
AND 2 ADJUSTABLE  
HANGING BASKETS**

—  
With metal boxes  
with non-slip mats  
for 300 mm width.

**BASE UNIT WITH  
LARDER PULL-OUT JUNIOR**

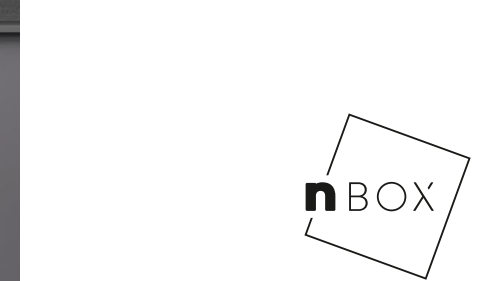
—  
With adjustable organiser system  
UBOXX with division for knives  
and cutting board holder,  
for 300 mm width.

**PULL-OUT UNIT  
WITH TOWEL RAIL**

—  
For 150 and 200 mm width  
Metal basket new in shape and  
colour Incl. non-slip mat.

**PULL-OUT UNIT  
WITH BAKING TRAY HOLDER**

—  
For a width of 150 and 200 mm  
Metal basket new in shape and  
colour Incl. non-slip mat.

**HALF CORNER UNIT  
WITH SWIVEL PULL-OUT****CAROUSEL CORNER UNIT  
WITH ROTARY SHELVES  
AND METAL RAILING****WASTE SEPARATION SYSTEM**

—  
Uniform colour change  
to slate grey.



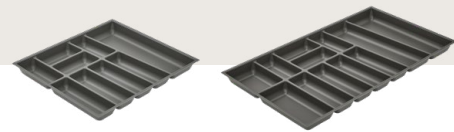
## UNIVERSAL ORGANISERS AND CUTLERY TRAYS



Whether in slate grey plastic, in solid oak or ash wood – our new cutlery trays and universal organiser systems perfectly match the nBOX style. They beautifully complement the coordination of interior organiser, carcass interior décor and nBOX.  
For an ingenious highlight, combine the interior organiser system in solid oak wood with the design covers and profiles in Sierra oak.

### CUTLERY TRAY YOUNO SLATE GREY

Design in slate grey,  
height: 49 mm, fits drawer depth of  
400 or 500 mm,  
side depth: 461 mm or 561 mm



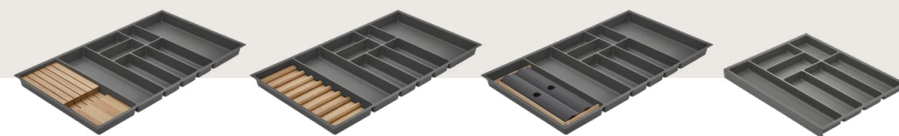
### OAK WOOD CUTLERY TRAY

Solid wood design in oak,  
height: 49 mm, fits drawer depth of  
400 or 500 mm,  
side depth: 461 mm or 561 mm  
Optionally available with knife block, with insert  
for spice containers up to max. Ø 50 mm or  
storage containers and insert for spice containers  
up to max. Ø 50 mm



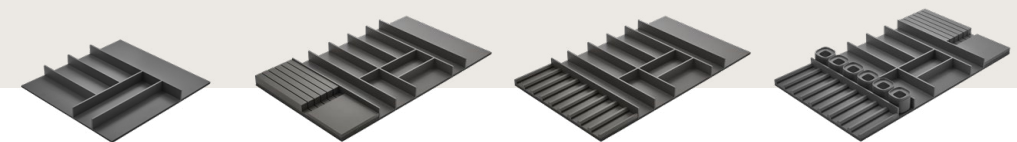
### CUTLERY TRAY DEPOT

Non-slip softtouch surface,  
slate grey, height: 49 mm,  
fits drawer depth of 400 or 500 mm,  
side depth: 461 mm or 561 mm  
Optionally available with knife block in solid  
wood, insert in solid wood for spice containers  
or insert for film dispenser in solid wood or as  
module insert.



### SLATE GREY ASH WOOD CUTLERY TRAY

Solid wood design in ash wood,  
slate grey lacquer,  
height: 49 mm, fits drawer depth of  
400 or 500 mm,  
side depth: 461 mm or 561 mm  
Optionally available with knife block, with insert  
for spice containers up to max. Ø 50 mm or  
storage containers and insert for spice containers  
up to max. Ø 50 mm





# ONE FOR ALL A PERFECT SYSTEM FOR ALL ROOMS

More than kitchen! With the new drawer system nBOX you will benefit from premium design as a new serial standard - even across multiple rooms. A minimalist design in slate grey, a tranquil natural look in Sierra oak or an exclusive extravagant style in Bronze metallic colour: Thanks to its customisation options and its delicate look, the nBOX looks beautiful not just in the kitchen, but also offers a visually and functionally perfect solution for any design style in bathrooms and living rooms.





# KITCHEN TRENDS 2025

Exciting new features, creative ideas, sophisticated design and innovative functions are once again the focus of this year's collection. Let our versatile design options inspire you to plan kitchens as unique as your customers.



01.  
—  
Full-length  
uniform tall unit doors  
—  
See pg. 68

02.  
—  
Tables in  
organic shapes  
—  
See pg. 70

03.  
—  
Smart lighting  
with Philips Hue  
—  
See pg. 72





# PERFECT FROM END TO END

Tall units are versatile miracles of storage space that adapt fully to customers' needs. In this year's collection, we have added continuous fronts for a stylish upgrade in the kitchen segment. The full-length design makes for clean visuals and tranquil surfaces, on which the vertically grained wood décor can be displayed to great effect.

The handleless design underlines this minimalist style.



## TALL UNITS WITH A FULL-LENGTH DOOR

Available in all highboard and tall unit heights.

Order info:

An F for full-length/joint-free front is added to all abbreviations:

H60 → HF60

HI60 → HIF60

HA30 → HAF30 etc.

## TENSION FITTING INCLUDED

All full-length tall unit doors of heights 1 to 3 Incl. XL come standard equipped with a tension fitting, exception: larger units.

- Applies to widths of 300, 400, 500 and 600 mm.
- For highboard heights, the tension fitting (MP-SPANN, article no. 7808) is available as an option.
- The tension fitting is positioned at the centre on the inside.

Available ranges:

615 LASER (without fronts 463),  
371 RIVA (only fronts 842, 839, 843),  
382 STRUCTURA (only fronts 403, 406, 407),  
317 TOUCH, 648 FLASH, 357 SENSO,  
945 EASYTOUCH, 157 NATURA,  
566 STONE ART, 312 FOCUS,  
808 INOX, 789 ARTIS

Not available with bar handle  
in drill pattern 17 and 19.





# A BEAUTIFUL PLACE TO DINE

No rough edges! Our new dining tables in boat and kidney shapes are the perfect piece for rounding off our product range. Whether in an open-plan kitchen that transitions seamlessly to a dining area or in a separate dining room: This organic design offers versatility in new shapes – for any style and any size of room. The table tops are available in a variety of fixed dimensions and can be combined with the modern frame Centro. And there is yet another new feature: The popular stool Cross is now available in an additional height for tall counters.

## TABLE FRAME CENTRO ATGC\* FOR WORKTOPS

—  
Powder-coated steel  
Incl. gliders, black,  
720 mm high

You can find the table frame in the accessories list of our sales manual.

The frame Centro can be combined both with the table tops in boat or kidney shape and with customised worktop geometries and free-form geometries from our product range.



## CROSS TALL STOOL CROSS-CHBH

—  
Seat height: 790 mm  
The tall stool is suitable for worktop heights of 1030 – 1160 mm. Cross sled frame, firmly padded seat, comes standard with plastic gliders, felt glider set STG-SET available as an option.

Frame colour: 010 Black, metal, wire, powder-coated black  
Available fabric selection: Storm Grey, Green Forest, Cognac, Steel Grey



## COMBINATION OPTIONS WITH THE TABLE FRAME CENTRO:



## TABLE TOP IN KIDNEY SHAPE APDTN\*

—  
In fixed dimensions,  
with décor edge, 38 mm thick  
Available in the sizes:  
2000 × 950 mm and 2400 × 1050 mm

You can find the table tops in chapter 4 Worktops of our sales manual.



## TABLE TOP IN BOAT SHAPE APDTB\*

—  
In fixed dimensions,  
with décor edge, 38 mm thick  
Available in the sizes:  
1600 × 950 mm, 1800 × 950 mm,  
2000 × 1050 mm, 2200 × 1050 mm,  
2400 × 1050 mm





# SMART PHILIPS HUE LIGHTING

The future of living is smart. Our new collaboration with Philips Hue reflects that trend. Together with the market leader for smart lighting\*, we have developed the first Philips Hue built-in furniture lights especially for kitchens.

Let your customers customise their light ambiance for any situation, simply via an app or voice commands.

In addition to warm white and cold white light, these lights offer pre-set light scenarios and 16 million colours.

Soft colour and brightness transitions are designed to fascinate and create a unique, colourful ambiance.

Smart lighting by

**PHILIPS**  
**hue**

EXCLUSIVE



## COMPATIBLE AND SMART HOME READY

The Philips Hue lighting system is easy to operate via the Bluetooth app. An innovative solution for a smart home: The Philips Hue Bridge offers even more functions, permits voice control and is compatible with other Philips Hue products and with appliances from our product range, such as the Bosch Sally oven.



## A NETWORKED HOME

The Philips Hue Bridge can control up to 50 lights in different rooms. Be it in the kitchen, dining room or living room: The adjustable light colour creates the perfect ambiance.



\* GfK, DE Q1 2024, Smart lighting in value



# LIGHT FOR ANY MOOD AND ANY SITUATION

Use our energy-efficient lighting systems to plan customised lighting concepts for any situation.

Our new exclusive Philips Hue linear lights and built-in lamps are perfect for illumination and create a new, smart experience of light. The vertical interior unit lighting illuminates the wall unit and creates an atmospheric ambience.



## LED NICHE LIGHT HUE LINEAR GRADIENT LNHLG 45 / 60 / 75-E

Aluminium profile Black  
LED – 24 V DC, 2200 – 6500 K  
RGBTW, 500 mm connection cable  
3-pin to light, LED converter 60 W /  
24 V DC RGBTW,  
depth: 24 mm, height: 25 mm,  
including 2000 mm connection  
cable to Zigbee receiver, 2000 mm  
power cable with plug, including  
4- channel Hue Tap Dial remote  
control FBHTD4K for controlling  
up to four lighting groups,  
energy efficiency rating: G  
Complete range of functions only in  
conjunction with the Philips Hue app.

## LED STARTER AND FOLLOW-UP SET L(F)SET-HA60

HUE WHITE & COLOR AMBIANCE

Consisting of: LED converter 60 W /  
24 V DC RGBTW, 2000 mm  
connection cable with plug, with 6  
input distributor for 6-pin connecting  
cable, including 4-channel ZigBee Tap  
Dial remote control, for controlling  
up to four lighting groups, 2000 mm  
power cable with plug

Complete range of functions only in  
conjunction with the Philips Hue app.  
Cannot be used together with the  
safety box Glasgow SIBOX. Usable for  
MP-LHA-U and MP-LHA-O.



## SURCHARGE FOR WALL UNITS WITH LED LIGHT DESIGN MP-LHA-U

HUE SPOT WHITE & COLOR  
AMBIANCE IN UNIT BASE

Consisting of: Unit base with  
integrated LED built-in light Hue, Spot  
Ambiance and 2000 mm connection  
cable to the starter set,  
energy efficiency rating: G



## SURCHARGE FOR WALL UNITS WITH LED LIGHT DESIGN MP-LHA-O

HUE SPOT WHITE & COLOR  
AMBIANCE IN UNIT TOP SHELF

Consisting of: Unit top shelf with  
integrated LED built-in light Hue, Spot  
Ambiance and 2000 mm connection  
cable to the starter set,  
energy efficiency rating: G



## 4-CHANNEL HUE TAP DIAL REMOTE CONTROL FBHTD4K

ZigBee Hue remote control for  
controlling up to four lighting groups.  
Setting dial for infinitely variable or  
incremental adjustment of hues,  
colour temperature and dimming.

Complete range of functions only in  
conjunction with the Philips Hue app.  
Usable for BRIDGEH, LNHLG\*(-E),  
LSET-HA\* and LFSET-HA.



## HUE BRIDGE BRIDGEH FOR LED STARTER AND FOLLOW-UP SETS WITH ZIGBEE

Smart switch centre for connecting LED  
starter and follow-up sets with ZigBee.  
Control via voice command or  
app of up to 50 units. Including 1000 mm  
Ethernet network cable for connection to  
home network.

Input voltage: 230 V AC, radio standard:  
ZigBee, degree of protection: IP 20,  
connection: Power supply with plug and  
1500 mm connection cable. Usable for  
LSET-SMART36/60 (-FB), LNHLG\*(-E),  
LSET-HA\* and LFSET-HA.



## MOTION DETECTOR FOR HUE BRIDGE BWMH

Battery-powered for adding to the Hue  
Bridge BRIDGEH. Wireless installation  
free-standing or wall-mounted. Not  
possible for LNHLG\*(-E).

**LED UNIT INTERIOR LIGHT HIDE**  
**LSIDHW\*** FOR WALL UNITS WITH  
HINGED DOOR  
**LSIDHUH** FOR BASE AND TALL UNITS  
WITH HINGED DOOR  
**LSIDHVEF** FOR GLASS CABINETS  
IN GENUINE WOOD VENEER

Consisting of two LED light strips, stainless  
steel appearance, 12 V DC, 2700 - 6500 K,  
2000 mm connection cable to starter set.  
For installation on the left and right of the  
carcase interior. Energy efficiency rating F,  
degree of protection IP44.



## CABLE AND TRANSFORMER BOX KTBX

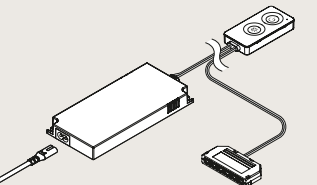
Plastic housing neutral grey, for max.  
4 converters and connection cable,  
for installation in plinth base.  
Dimensions (H × W × D):  
81 mm × 248 mm × 366 mm,  
cut-out dimension width: 215 mm,  
cut-out dimension depth: 300 mm

Can be used as of 70 mm plinth height  
and 600 mm unit width.



## LED STARTER AND FOLLOW-UP SET LSET-SMART36 / 60 LSET-SMART36-/60-FB WITH ZIGBEE EMOTION DIMMER SMART SWITCH

The splash-proof safety box Glasgow SIBOX  
is required for use in bathrooms!



## RADIO DOOR CONTACT SWITCH FTKS

For switching the unit interior lighting,  
200 mm connection cable to radio receiver,  
200 mm connection cable with 2-input  
distributor. Usable for LSET-SMART36/60.



## 4-CHANNEL REMOTE CONTROL FB4K

For controlling up to four lighting groups  
from Smart Switch LED starter and follow-  
up sets. Emotion Dimmer for infinitely  
variable or incremental adjustment of  
colour temperature and dimming level.  
Usable for LSET-SMART36/60(-FB).





# NEW LOOKS, NEW TECHNOLOGY! XTRA HOB HOT PLATE EXTRACTOR FAN

We are continuing the success story of our multiple-award-winning Xtra Hob hot plate extractor fan in grey slate décor – by adding two innovative trend variants. Its special look and feel make the Xtra Hob in all its variations a perfect fit for a contemporary, open-plan living arrangement and give it an understated charm. The powerful hot plate extractor fan can be top-mounted or flush-mounted and represents the modern way of cooking with its 2-in-1 concept. Inductive, powerful and with maximum energy efficiency – this is tomorrow’s technology, available today, exclusively from us.

XTRAHob



## CLASSY HIGHLIGHT: XTRA HOB IN BRONZE

With two bridge zones, available in 800 mm.

The Xtra Hob hot plate extractor fan with bronze print fulfils the desire for that special touch of class and is fully in tune with current trends. On black ceramic glass, bronze truly gets to shine – and harmonise perfectly with a variety of other elements in our collection, such as design covers and profiles of the new nBOX, handles and bar handles, elements in worktop décors and niches as well as sinks and mixing taps. This gives you a plethora of options for a fully coordinated look. At the same time, the bronze-coloured elements on the Xtra Hob are so subtle that the hot plate extractor fan fits perfectly into any kitchen style.

- Width: 800 mm
- LED display: white
- Installation: unguided circulating air, duct-guided circulating air/extraction



## UNIQUE CERAMIC GLASS: XTRA HOB IN MATT BLACK

Exceptional scratch resistance and anti-fingerprint properties, available in 600 mm and 800 mm.

The Xtra Hob hot plate extractor fan in matt black combines advanced technology and elegant design. The structured surface reduces reflections by 80 %, producing the stylish matt look. This highlight of a modern kitchen goes beautifully with a variety of designs. With the matt black EuroKera surface made of Onyka ceramic glass, we offer a trendsetting appliance at a highly attractive price.

- Widths: 600 mm, 800 mm
- LED display: red
- Installation: unguided circulating air, duct-guided circulating air/extraction



## INNOVATIVE FEATURES FOR MAXIMUM CUSTOMER SATISFACTION

The EuroKera matt black cooktop is defined by its exceptional scratch resistance thanks to a revolutionary coating. This guarantees that pots, pans and other kitchen utensils leave no marks during everyday use. Your customers will love the durability and aesthetic appeal of this appliance. Moreover, the easy-care surface is quick and easy to clean. Fingerprints and stains stand no chance and the hot plate remains flawlessly clean.



All details & technical  
information for the Xtra Hob



# INNOVATIVE ELECTRIC APPLIANCES

New designs, innovative functions and sophisticated technologies by well-known appliance brands now strengthen our range of appliances. This expansion of our portfolio keeps our product range in line with the latest standards and makes sure we fulfil ever-growing customer requirements.

## BORA

### BORA

BORA appliances are available to all of our retail partners, even outside of BORA's selective marketing structures.

### FASTENING STRIPS IN 010 BLACK

For ovens, microwaves, steam ovens and compact appliances for LINE N appliance housing units with vertical recessed handle.

The fastening strips included in the scope of delivery for installing ovens, microwaves, steam ovens and compact appliances are available in the colours 014 Stainless steel appearance and 010 Black. Please indicate the desired colour when placing your order. If no colour is specified in the order, the fastening strips in 014 Stainless steel appearance will be supplied.



EXCLUSIVE



## BOSCH

### BOSCH SALLY EDITION

The exclusive Sally edition is only available from us. With it, we offer our customers an attractive appliance portfolio that can be marketed exclusively with special focus on the end consumer.



### BUILT-IN OVEN HBG578EB7

Order no.: 82264

- 9 types of heating
- Self-cleaning/pyrolysis®
- High-speed heating
- SoftClose door cushioning
- Home Connect



### CERAMIC GLASS HOT PLATE PVS831B16E

Order no.: 82390

- Combination zone
- 17 power levels
- PowerBoost function
- Pan sensor



### FULLY INTEGRATED DISHWASHER SBV4ECX27E

Order no.: 82914  
Installation height 86.5 cm

- EEC A, 42 dB
- 6 programs, 5 options
- MaxFlex basket system
- Vario drawer
- Home Connect



### FULLY INTEGRATED DISHWASHER SMV4ECX27E

Order no.: 82915  
Installation height 81.5 cm

- EEC A, 42 dB
- 6 programs, 5 options
- MaxFlex basket system
- Vario drawer
- Home Connect



# SINKS FOR ALL STYLES

Various sink sizes, materials and designs offer maximum flexibility for customised kitchen planning. Whether customers choose stainless steel or the easy-to-clean, robust TECTONITE – our sinks will impress them with quality, durability and first-class service. On request we also make custom sink cut-outs. This saves time and money during installation.

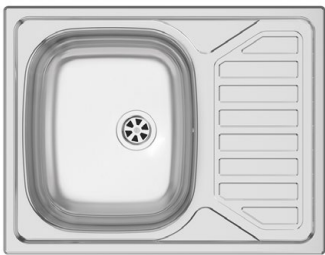


New features 2025 Sinks and taps



- RODI**  
UNA 50 N, STAINLESS STEEL AND BRONZE METALLIC COLOUR
- 1 sink 500 × 380 × 200 mm
  - Incl. 3 1/2" sieve valve
  - Manual operation with drain and overflow set
  - Odour stop
  - Space-saving connector
  - Flush-mounted installation possible

Outer dimensions: 540 × 420 mm  
Cut-out dimensions: 520 × 400 mm



- RODI**  
OKIO LINE 65, STAINLESS STEEL
- 1 sink 340 × 400 × 150 mm
  - Drip tray
  - Incl. 3 1/2" sieve valve
  - Eccentric equipment with drain and overflow set
  - 2 tap holes
  - Odour stop
  - Space-saving connector

Outer dimensions: 650 × 500 mm  
Cut-out dimensions: 630 × 480 mm

Also available as  
**RODI Okio Line 65, eccentric equipment, stainless steel**  
for flush mounting

Available from January 2025.



- RODI**  
OKIO LINE 78, STAINLESS STEEL
- 1 sink 340 × 400 × 160 mm
  - Drip tray
  - Incl. 3 1/2" sieve valve
  - Eccentric equipment with drain and overflow set
  - 2 tap holes
  - Odour stop
  - Space-saving connector

Outer dimensions: 800 × 500 mm  
Cut-out dimensions: 780 × 480 mm

Available colours:  
Stainless steel and textured stainless steel

Available from January 2025.



- RODI**  
OKIO LINE 80, ECCENTRIC EQUIPMENT, STAINLESS STEEL
- 1 sink 340 × 400 × 160 mm
  - Drip tray
  - Incl. 3 1/2" sieve valve
  - Eccentric equipment with drain and overflow set
  - 2 tap holes
  - Odour stop
  - Space-saving connector

Outer dimensions: 800 × 500 mm  
Cut-out dimensions: 780 × 480 mm

Available colours:  
Stainless steel and textured stainless steel

Available from January 2025.



SINKS



**FRANKE**  
ANTEA AZN 611-100 LB, STAINLESS STEEL

- 1 sink 480 × 420 × 160 mm
- Drip tray
- Incl. 3 1/2" sieve valve
- Eccentric equipment with drain and overflow set
- 2 tap holes

Outer dimensions: 1000 × 500 mm  
Cut-out dimensions: 880 × 480 mm

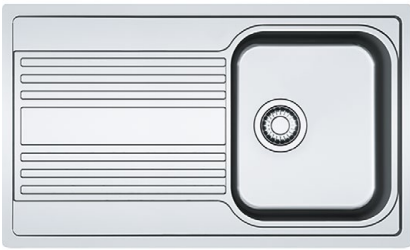
Available from January 2025.



**FRANKE**  
ANTEA AZN 651, STAINLESS STEEL, SATIN FINISH

- 1 sink 340 × 420 × 160 mm
- 1 waste sink 170 × 280 × 80 mm
- Drip tray
- Incl. 3 1/2" sieve valve
- Eccentric equipment with drain and overflow set
- 2 tap holes
- Space-saving connector

Outer dimensions: 1000 × 500 mm  
Cut-out dimensions: 980 × 480 mm



**FRANKE**  
RAPID RPX 211-86, STAINLESS STEEL

- 1 sink 340 × 400 × 180 mm
- Drip tray
- Incl. 3 1/2" integrated sieve valve
- Eccentric equipment with drain and overflow set and rotary knob operation
- 2 tap holes
- Flush-mounted installation possible

Outer dimensions: 864 × 514 mm  
Cut-out dimensions: 855 × 495 mm

Also available as  
**FRANKE Rapid RPX 251-100, stainless steel**  
with waste sink

Available from January 2025.



**FRANKE**  
SIRIUS SID 610-40, MADE OF TECTONITE

- 1 sink 365 × 378 × 200 mm
- Incl. 3 1/2" sieve valve
- Manual operation with drain and overflow set
- 1 tap hole

Outer dimensions: 430 × 530 mm  
Cut-out dimensions: 441 × 514 mm

Available colours:  
Carbon, Urban Grey and Blanc Arctic

Available from January 2025.



**FRANKE**  
SPARK SKX 651, STAINLESS STEEL

- 1 sink 340 × 420 × 160 mm
- 1 waste sink 170 × 280 × 80 mm
- Drip tray
- Incl. 3 1/2" sieve valve
- Eccentric equipment with drain and overflow set
- 2 tap holes
- Space-saving connector

Outer dimensions: 1000 × 500 mm  
Cut-out dimensions: 980 × 480 mm



**FRANKE**  
HYDROS HDX 214, STAINLESS STEEL

- 1 sink 340 × 435 × 180 mm
- Drip tray
- Incl. 3 1/2" integrated sieve valve
- Eccentric equipment with drain and overflow set and rotary knob operation
- 2 tap holes
- Space-saving connector
- Flush-mounted installation possible

Outer dimensions: 860 × 510 mm  
Cut-out dimensions: 847 × 497 mm



**ELLECI**  
LIFE 410, MADE OF GRANITEK®

- 1 sink 480 × 435 × 180 mm
- Drip tray
- Incl. 3 1/2" sieve valve
- Manual operation with drain and overflow set
- 2 tap holes, 2 of which are predetermined breaking points

Outer dimensions: 860 × 500 mm  
Cut-out dimensions: 840 × 480 mm

Also available as  
**ELLECI Life 410, made of GRANITEK®**  
with mixing tap

Available from January 2025.



# TAPS AS DESIGN ELEMENT

Metallic is in style. That is why a particular highlight of this year's collection is the inclusion of fashionable bronze-coloured taps as a stylish metal eye-catcher.



## GESI HIGH-PRESSURE SINGLE-LEVER MIXING TAP STILA

- Connection for hot and cold water
- Swivel spout, swivel range 360°
- Aerator 24 mm diameter
- Flexible connection hoses
- Reinforced panels

Available colours:  
Stainless steel appearance, Blue steel appearance, Yellow gold colour, Bronze metallic colour

Also available as  
**high-pressure single-lever mixing tap STILA with spray head**



## GESI LOW-PRESSURE SINGLE-LEVER MIXING TAP DELIA

- Connection for hot and cold water
- Swivel spout, swivel range 360°
- Aerator 14 mm diameter
- Flexible connection hoses
- Reinforced panels

Available colours:  
Chrome and Black matt

Also available as  
**low-pressure single-lever mixing tap DELIA with spray head**

Available from January 2025.

## GESI HIGH-PRESSURE SINGLE-LEVER MIXING TAP DELIA

- Connection for hot and cold water
- Swivel spout, swivel range 360°
- Aerator 14 mm diameter
- Flexible connection hoses
- Reinforced panels

Available colours:  
Chrome, Stainless steel appearance, Black matt, Rust red, Mineral green, Fjord blue, Yellow gold colour, Bronze metallic colour

Also available as  
**high-pressure single-lever mixing tap DELIA with spray head**





# LIVING INSPIRATION

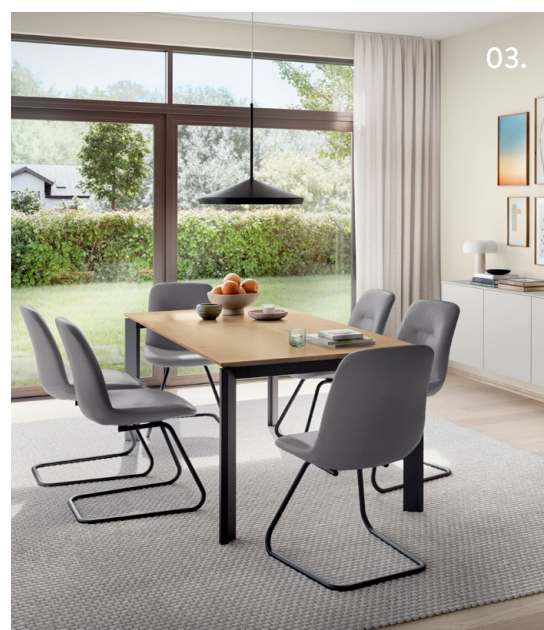
Let our new highlights inspire you. With high-quality genuine wood veneers in Native Oak, our collection offers timeless pieces of furniture that look classy and natural all at once. The perfect furniture for a first-class ambiance and the perfect addition to any living, dining and TV space.



01.



02.



03.

01.

—  
Living and feeling good  
with genuine wood veneer  
stand-alone furniture

—  
See pg. 88

02.

—  
Genuine wood veneer  
coffee tables with a vivid  
wood texture

—  
See pg. 92

03.

—  
The perfect addition:  
Genuine wood veneer table  
tops

—  
See pg. 93





# GENUINE WOOD VENEER: NATURALLY UNIQUE

Our genuine wood veneer furniture in brushed Native Oak features a delicate grain and vivid wood textures that will give each piece of furniture a truly unique look. Each surface is a unique piece and practically impossible to distinguish from solid wood just by looking at it. These pieces reflect the growing trend of wood materials, but are available at a more affordable price. With a warm presence and pleasant feel, genuine wood veneer furniture makes any space more inviting and a true pleasure to live in.



## NATURAL HARMONY

Be it as a sideboard, glass cabinet, tall or midi unit – these genuine wood veneer pieces look beautiful as stand-alone eye-catchers or part of a coordinated plan and offer many options for fully coordinated living concepts. The art of combination: Stylish elements combine beautifully with solid-coloured unit elements from our current collection. Matching dining and coffee tables in the same veneer complement the overall style.



## LONG-LIVED QUALITY

High-quality processing, durability and resistance: The surfaces of our furniture are designed to maintain their original beauty and convenient function for many years.





# STAND-ALONE FURNITURE AS AN EYE-CATCHER



## WALL PANEL IN GENUINE WOOD VENEER WPEF120-72

—  
In Native Oak brushed  
width: 1200 mm  
height: 720 mm  
Optionally available with LED light  
design MP-WPL (6498).

## SIDEBOARD IN GENUINE WOOD VENEER SEF45-86

—  
Floor-standing  
in Native Oak brushed  
with mechanical opening  
support mechanism,  
width: 450 mm  
depth: 460 mm  
total height: 884 mm

## SIDEBOARD IN GENUINE WOOD VENEER SEF45-86

—  
Floor-standing  
in Native Oak brushed  
with mechanical opening  
support mechanism,  
width: 450 mm  
depth: 460 mm  
total height: 884 mm



## HIGHBOARD IN GENUINE WOOD VENEER HEF45-130 / -202

—  
Floor-standing  
in Native Oak brushed  
with mechanical opening support mechanism,  
width: 450 mm  
depth: 350 mm  
total height \*-130: 1316 mm  
total height \*-202: 2036 mm

## MIDI GLASS CABINET IN GENUINE WOOD VENEER MVEF45-130

—  
Wall-mounted  
in Native Oak brushed  
with segmented glass door and  
glass shelves using grey glass,  
with mechanical opening  
support mechanism,  
width: 450 mm  
depth: 350 mm  
height: 1296 mm

Alternatively also available as  
MEF45-130  
with closed door.



## GLASS CABINET IN GENUINE WOOD VENEER HVEF45-130 / -202

—  
Floor-standing  
in Native Oak brushed,  
with segmented glass door and 1 glass shelf using  
grey glass,  
with mechanical opening support mechanism,  
width: 450 mm  
depth: 350 mm  
total height \*-130: 1316 mm  
total height \*-202: 2036 mm





# HIGH-QUALITY VENEERED COFFEE AND DINING TABLES

Our genuine wood veneer table tops with their natural wood texture and their stylish Swiss edge are an eye-catcher with a strong personality. Their natural hard wax surface makes them particularly robust and ideal for daily use as a dining table. Three frame options, a variety of fixed dimensions and pull-out versions make these elegant dining tables a practical and flexible solution for different sizes, styles and requirements. Perfectly coordinated – our popular coffee tables Dakar and Dublin are also available with genuine wood veneer table tops in 2025.



**DUBLIN COFFEE TABLE**  
CT-DUB\*

- Table frame powder-coated steel Incl. gliders
- 1 top shelf, 16 mm thick
- Height: 307 mm
- Available sizes:  
800 x 800 mm, 1200 x 800 mm

Available in:  
916 Native Oak

Available frame colour: 010 Black



**SWISS EDGE**

For a particularly style-defining detail, we have added a Swiss edge. This subtle, all-round bevel cut at the bottom gives the genuine wood veneer table tops a particularly delicate look. For a light, highly elegant style.



**DINING TABLE LISSABON**  
ETA-LIS\*

- 1 table sled frame, powder-coated steel Incl. gliders
- Genuine wood veneer table top with Swiss edge, 24 mm thick
- The grain runs lengthwise
- 2 attachable boards of 500 mm length each
- Available sizes:  
table height: 760 mm,  
table width: 950 mm,  
available table lengths, fixed (ET-LIS):  
1600 mm, 1800 mm, 2000 mm,  
with Syncro-Frontslide pull-out (ETA-LIS):  
2600 mm, 2800 mm, 3000 mm
- Available frame colour: 010 Black



**DINING TABLE OSLO**  
ETA-OSL\*

- 1 four-leg table frame, powder-coated steel Incl. gliders
- Genuine wood veneer table top with Swiss edge, 24 mm thick
- The grain runs lengthwise
- 2 attachable boards of 500 mm length each
- Available sizes:  
table height: 760 mm,  
table width: 950 mm,  
available table lengths, fixed (ET-OSL):  
1600 mm, 1800 mm, 2000 mm,  
with Frontslide pull-out (ETA-OSL):  
2600 mm, 2800 mm, 3000 mm
- Available frame colour: 010 Black



**DINING TABLE TOKIO**  
ETA-TOK\*

- 1 Y table frame, powder-coated steel Incl. gliders
- Genuine wood veneer table top with Swiss edge, 24 mm thick
- The grain runs lengthwise
- 2 attachable boards of 500 mm length each
- Available sizes:  
table height: 760 mm,  
table width: 950 mm,  
available table lengths, fixed (ET-TOK):  
1600 mm, 1800 mm, 2000 mm,  
with Syncro-Frontslide pull-out (ETA-TOK):  
2600 mm, 2800 mm, 3000 mm
- Available frame colour: 010 Black



**COFFEE TABLE DAKAR**  
CT-DAK\*

- Table frame powder-coated steel Incl. gliders
- 2 top shelves, 16 mm thick
- Height: 419 mm
- Available sizes:  
800 x 800 mm, 1200 x 800 mm

Available in:  
916 Native Oak

Available frame colour: 010 Black



# BRAND-NEW BATHROOM INSPIRATIONS

With a natural aesthetic and functional elegance, our product range is perfectly adapted to current customer demands. Organic shapes, flowing wood grains and marble décors reflect the beauty of nature. Black elements add modern highlights. Sophisticated LED lighting complements the bathroom ambiance with the ideal lighting mood.



01.  
—  
Mirrors with organic  
shapes – harmony  
all-round  
—  
See pg. 96

02.  
—  
Console shelves  
in popular  
natural looks  
—  
See pg. 97

03.  
—  
Stylish black, from the  
surface-mounted hand  
basin to the tap  
—  
See pg. 100





# DETAILS THAT REFLECT INDIVIDUALITY

Whether mounted vertically or horizontally: Our oval-shaped large-surface mirror is a real eye-catcher.

This wall-mounted mirror with an organic shape is illuminated around the edges and opens up new options for modern bathroom design with its gentle, rounded look. The acrylic glass top-mounted LED light emits even, soft illumination and features a slim, elegant design to adapt it to our mirrors and mirrored cabinets. The console shelves for surface-mounted hand basins in different natural looks such as wood and marble make for an ideal combination.



## MIRROR GRAYCE WITH LED LIGHTING

SP-GRAYCE90 width: 900 mm, height: 600 mm  
 SP-GRAYCE120 width: 1200 mm, height: 800 mm  
 1 all-round sandblasted LED light window,  
 10 mm wide, depth: 24 mm,  
 LED – 24 V DC, 3000 – 6000 K,  
 degree of protection IP 44,  
 1 touch dimmer, 1 connection cable / 220 – 240 V  
 Energy efficiency rating: E  
 Horizontal and vertical assembly possible.

Available in the sizes:  
 900 × 600 mm and 1200 × 800 mm

## LED TOP-MOUNTED LIGHT PEONIA LAPEO\* FOR PLANNING ON MIRRORRED CABINETS WBSP\* AND MIRRORS WITH A SIDE BEVEL SPL-FAC\*

9 mm high, 89 mm deep,  
 acrylic glass, satin-finished with aluminium LED light profile,  
 LED -12 V DC, 2700 – 6500 K  
 1800 mm connection cable to starter set  
 Energy efficiency rating: F / degree of protection IP 44  
 LED starter set LSET-SMART36/60(-FB) not included in the  
 scope of delivery.

Available widths:  
 600 / 800 / 900 / 1000 / 1200 mm



## CONSOLE SHELF KONSOP

USABLE AS HAND BASIN COUNTERTOP  
 OR MEDIA CONSOLE

100 mm thick, coated on both faces,  
 horizontal structure,  
 polymer edged on front and side,  
 including support console,  
 up to 1003 mm 2 support consoles,  
 from 1203 mm 3 support consoles.  
 Can be planned both freely suspended and  
 directly on a base unit.

The material is open and feely accessible  
 at the bottom. The load capacity of each  
 console shelf with support consoles is max.  
 100 kg. The load capacity of the wall must be  
 checked on site.

Available widths:  
 803 / 1003 / 1203 / 1403 / 1603 mm

Available worktop décors:  
 • 198 Sierra oak reproduction  
 • 362 Como oak reproduction  
 • 354 Concrete slate grey reproduction  
 • 235 Venato Bianco marble reproduction  
 • 320 Venato Nero marble reproduction



For surcharge 9352 AP-AUS, a cut-out for surface-mounted hand  
 basins at the centre is available. From a width of 1203, the cut-out  
 for surface-mounted hand basins is also available on the left or right.  
 No width and depth changes possible.





#### PERFECT ADDITION TO THE nBOX

Combine them with our new, innovative drawer and pull-out system nBOX or with the console shelves in the décors concrete slate grey or Venato Nero marble – either way, matching bathroom accessories make it easy to keep your bathroom tidy and create a coordinated look.



#### ODOUR TRAP COVER

SIA1WT / SIA2WT

Design in slate grey, odour trap cover, single-part, suitable for drawers or pull-outs with wooden back panel, from width 450 mm.



#### ORGANISER SET FOR STORAGE CONTAINERS

OS-VDK3 / OS-VDG2

For fastening on frames and odour trap cover, plastic, slate grey. Not possible together with design cover.

Designs:

- 3 small storage containers
- 2 large storage containers

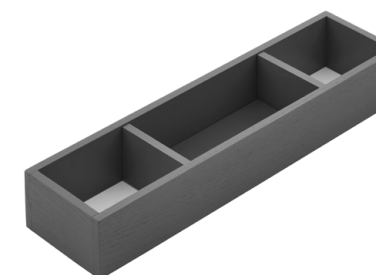


#### STORAGE CONTAINER SET

VDK3 / VDG2

Available designs:

- 3 small storage containers VDK3, matching organiser set OS-VDK3.
- 2 large storage containers VDG2, matching organiser set OS-VDK2.



#### WOODEN INSERT SLATE GREY ASH WOOD WITH SLIDER HES\*

Solid wood design in ash wood, slate grey lacquer, fits pull-out depth of 400 mm, side depth: 461 mm



# ALL BLACK – FROM THE TAP TO THE HAND BASIN

Black details give a bathroom a touch of luxury. In addition to the oval-shaped ceramic surface-mounted hand basin in White high gloss, our range of products includes an oval model in Black matt, complemented by perfectly coordinated taps. For a special highlight: The drain of this surface-mounted hand basin also has a black matt design.

## SURFACE-MOUNTED HAND BASIN OLIVE 61, CERAMIC

- 1 sink 595 × 325 × 120 mm
- Outer dimensions: 615 × 345 × 145 mm
- Height: 145 mm
- Cut-out dimensions: Diameter 70 mm

Available colours:  
White high gloss and Black matt



## TAP KLUDI PURA XL

Available colours:  
Chrome and Black matt



## TAP EUROSMART M

With pull rod and drain

Available colours:  
Black matt



## CLOU DRAIN

Available colours:  
Black matt



## HAND BASIN ODOUR STOPPER

Available colours:  
Black matt







# DISCONTINUED 31.12.2024

Fronts / Surrounds / Elements / Accessories



FASHION 168 PG 4  
—  
**Lacquer, honed alpine white**  
• New as SOFTLINE 507 with 1.8 mm edge radius in PG 5  
• Deliveries will be changed over automatically on 01/01/2025



FASHION 173 PG 4  
—  
**Lacquer, honed white**  
• New as SOFTLINE 509 with 1.8 mm edge radius in PG 5  
• Deliveries will be changed over automatically on 01/01/2025



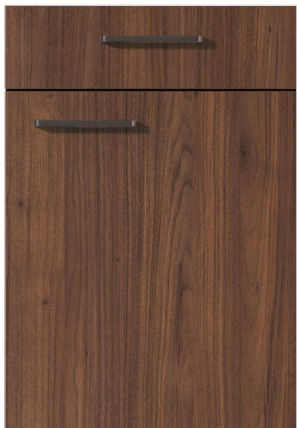
FASHION 175 PG 4  
—  
**Lacquer, honed ivory**  
• New as SOFTLINE 510 with 1.8 mm edge radius in PG 5  
• Deliveries will be changed over automatically on 01/01/2025



FASHION 171 PG 4  
—  
**Lacquer, honed satin grey**  
• Also as upright panels and top shelves  
• New as SOFTLINE 508 with 1.8 mm edge radius in PG 5  
• Deliveries will be changed over automatically on 01/01/2025



FASHION 165 PG 4  
—  
**Lacquer, honed stone grey**  
• Also as upright panels and top shelves



RIVA 840 PG 2  
—  
**Walnut reproduction**



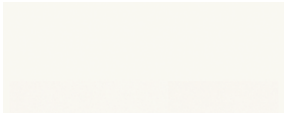
STONEART 304 PG 4  
—  
**Stone grey slate reproduction**



CHALET 881 PG 9  
—  
**Lacquer, honed sand**



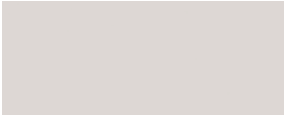
DISCONTINUED CARCASE DÉCORS



022 White gloss

- Only discontinued as carcase. Cornice and top-mounted shelves as well as surround items remain in collection.

DISCONTINUED WORKTOP DÉCORS



WORKTOP DÉCOR 070  
Satin grey

- Also in Slim Line



WORKTOP DÉCOR 124  
Walnut reproduction

- Also in Slim Line, as upright panels, top shelves, media furniture, shelf units and plinth panels



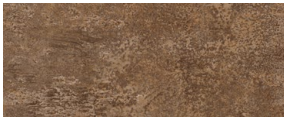
WORKTOP DÉCOR 265  
Rusty Plates reproduction

- Also as upright panels and top shelves



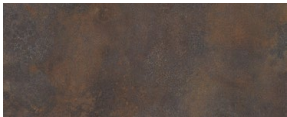
WORKTOP DÉCOR 319  
Oxid décor

- Also as upright panels and top shelves



WORKTOP DÉCOR 355  
Ferro bronze reproduction

- Only in Slim Line



WORKTOP DÉCOR 117  
Vintage Copper reproduction

- Also as upright panels and top shelves



WORKTOP DÉCOR 393  
Vintage oak reproduction

- Also as upright panels and top shelves



WORKTOP DÉCOR 345  
Yukon oak reproduction

- Also as upright panels and top shelves

DISCONTINUED NICHE CLADDING



NVM 437  
Décor leek design



NVM 441  
Décor bottle design



NVM 445  
Décor World of Tea



NVM 531  
Décor Skyline



NVM 554  
Décor Indian Stone



NVM 561  
Décor fjord



NVM 565  
Décor forest

DISCONTINUED HANDLES



062 METAL HANDLE  
Stainless steel finish



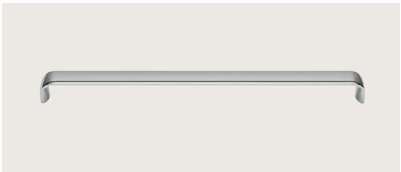
121 METAL HANDLE  
Stainless steel finish



237 METAL HANDLE  
Stainless steel finish



608 METAL HANDLE  
Stainless steel finish



190 BOW HANDLE  
Brilliant chrome



192 METAL HANDLE  
Brilliant chrome



720 METAL HANDLE  
Chromed black



203 METAL- / PORCELAIN HANDLE  
Ivory / Antique silver colour



276 METAL HANDLE  
Antique iron colour



283 METAL HANDLE  
Antique iron colour



284 METAL HANDLE  
Antique silver colour



616 CAST IRON HANDLE  
Black



610 CAST IRON KNOB  
Black



199 WOODEN HANDLE  
Oak



710 BAR HANDLE  
Stone grey



009 LINE N RECESSED HANDLE  
Stone grey



DISCONTINUED UNITS AND ACCESSORIES

DISCONTINUED UNITS

- Base unit with laundry basket tablar  
NUWTAB\* → 50502  
NUWTAB\*-X → 56502
- Highboard with multi-functional holder Laundry Area  
NHSMF\* → 56597, 56598  
NHSMF\*-X → 68597, 68598  
NHSMF\*-1 → 21170, 21171  
NHSMF-1X → 34913, 34914  
NHSMF-2 → 35170, 35171  
NHSMF-2X → 45913, 45914  
NHSMF-3 → 53170, 53171  
NHSMF-3X → 56913, 56914
- Round panel at end of run  
WAR25-36T → 25896  
WAR25-43T → 25897  
WAR25-55T → 25898  
WAR25-58T → 25899  
WAR25-63T → 25879  
WAR25-72T → 25890
- Railing set in stainless steel appearance  
R-SET\* → 3501, 3502, 3503
- Profile for niche cladding, top  
NVP\* → 3946, 3947, 3948
- End caps for NVP  
NVP-EK → 3949
- Table frame stainless steel appearance  
ATG-E → 4100  
ATGT-E → 4130  
ABG → 4145

DISCONTINUED ACCESSORIES

- Cleaning products pull-out, wire basket  
AS4331 → 4331
- Tray flat Linero MosaiQ  
RSM-SF → 45811
- 135° plastic profile grey  
RKZ → 9229
- Biological waste container Junior,  
double waste collector  
AS9440 → 9440
- Built-in waste container  
AS9449 → 9449
- Adapter for sink base units with  
centre post, zinc-plated  
ASZ9465 → 9465
- Table frame Otello  
ATGO \*-W → 40031, 40032, 40033, 40034
- Support console Slim-Line, diagonal  
ATK-SL → 44029
- Round support console, straight  
STK-R → 44030
- Sled-style towel rail, steel  
HTKU\* → 3336, 3335, 3334
- Towel rail matching bow handle no. 190  
HTHS190 → 3319
- Surcharge for 16 mm upright panels in carcase height  
with LED light design front  
MP-LWV → 7992
- LED starter set  
LSET\* → 5947, 5948  
LSET\*-F → 15002, 15086  
LSETR\*-F → 15083, 15084  
LSET\*-4K → 15004
- LED follow-up set  
LFSET\* → 5949, 5996
- Gateway  
GATE → 15005
- Emotion Home Base  
EMHB → 15080
- 3-input distributor for 230 V  
LVT3 → 5298

DISCONTINUED SINKS AND HAND BASINS

- Sink Rodi UNA  
87143, 87255, 87141, 87159, 87242
- Sink SPU T87042 ETN 611-58 stainless steel  
87042 → replaced by Rodi OKIO LINE 65 FLAT
- Sink SPU T 87083 Spark SKX 611-63 stainless steel  
87083 → replaced by Rodi OKIO LINE 65 FLAT
- Sink SPU T 87071 Spark SKX 211-63 stainless steel  
87071 → replaced by Rodi OKIO LINE 65 FLAT
- Sink SPU T87044 Eurostar ETN 614 stainless steel  
87044 → replaced by Rodi OKIO LINE 78 DEEP
- Sink SPU T87046 Eurostar ETL 614 stainless steel tex-  
tured  
87046 →replaced by Rodi OKIO LINE 78 DEEP
- Built-in sink Patos D-\*  
87403, 87433, 87413, 87423
- Elleci Easy Corner Granitek white  
87697
- Sink SPU T87271 Euroform stainless steel  
87271 → replaced by Rodi OKIO LINE 80 DEEP
- Sink SPU T87279 Euroform stainless steel textured  
87279 → replaced by Rodi Okio Line 80 Deep
- Sink SPU T 87070 SPARK SKX 211-86 stainless steel  
87070 → replaced by Franke RPX 211-86,  
changed design
- Sink SPU T 87063 Antea AZN 611-100 stainless steel  
87063 →replaced by Franke AZN 611-100  
LB, changed sink size
- Sink SPU T 87073 SPARK SKX 251 stainless steel  
87073 →replaced by Franke RPX 251-100,  
changed design
- Corner sink SPU T87068 ANTEA AZN 681 stainless steel  
87068

DISCONTINUED MIXING TAPS

- KludiHD Mix  
17622, 17624, 17625, 17626
- Carlo nobili New Road  
17701, 17702, 17703, 17704
- Utensil system for covering the odour trap cut-out  
MP-SIA →7933

DISCONTINUED ELECTRIC APPLIANCES

- All appliances of the brand Altus





